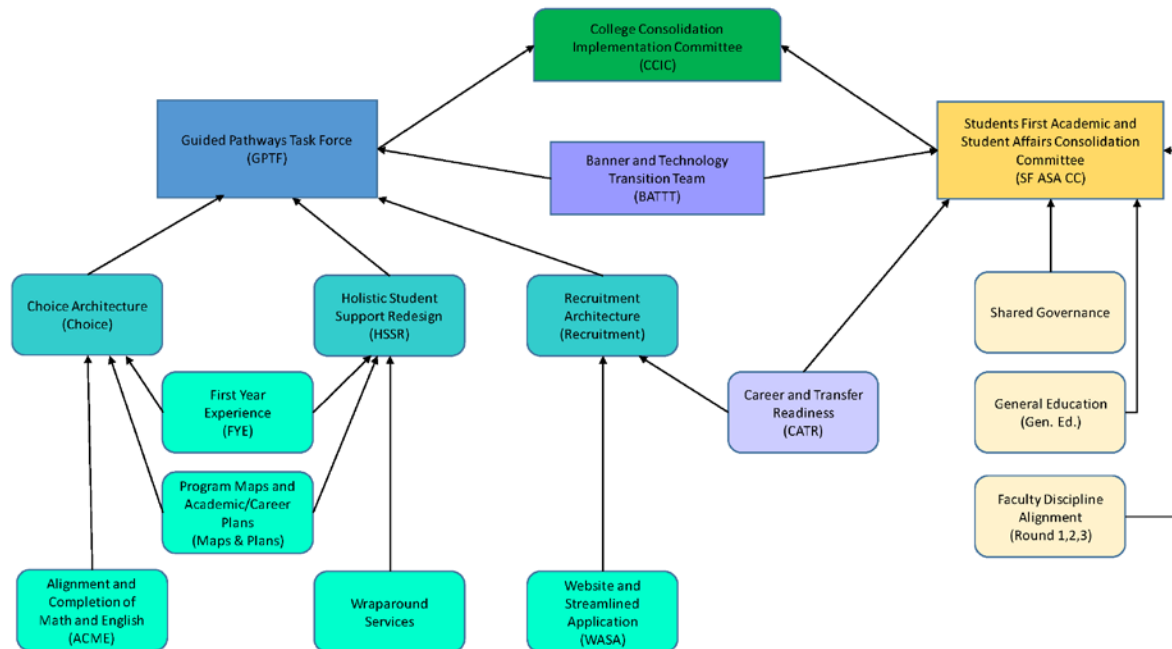


# Working Together For Student Success

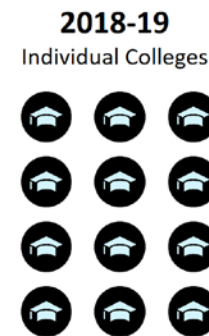
The **Students First** plan, which is focused on improving student success and equity, has been endorsed by the Board of Regents for CSCU.

The **College Consolidation Implementation Committee (CCIC)** was formed to review and respond to recommendations of the **Guided Pathways Task Force** and **Academic & Student Affairs Consolidation Committee** as we move towards the one college. The CCIC oversees the groups charted below.



**Guided Pathways** is the framework for the CSCU student success efforts. The Guided Pathways Task Force supports the CSCU **Student Success Center** as it advances the Guided Pathways framework across the community colleges. The Center is part of the national Student Success Center network managed by **Jobs for the Future (JFF)**.

The Center engages **Achieving the Dream (ATD)** to support the colleges in improving student success and closing equity gaps and works with the twelve **Campus Student Success Teams** to facilitate college efforts. ATD is a national network that supports colleges in building institutional capacity and student success reforms at scale.



**Groups reporting to the College Consolidation Implementation Committee**

collectively recommend policies, frameworks, and practices for the one college under the Guided Pathways model facilitated by the Student Success Center

**United toward a student success & equity-focused one college**

Through Student Success Center coordination, Achieving the Dream, and the College Student Success Team Coordinating Council, we are united toward a student success and equity-focused one college

**12 College Student Success Teams**

coached by Achieving the Dream, locally determine how to best respond to individual student and community needs and how to contextualize one college policies, frameworks, and practices

**2023-24**  
One CSCU College

