

Connecticut State Community College

DRAFT - Connecticut State Community College Structure - DRAFT

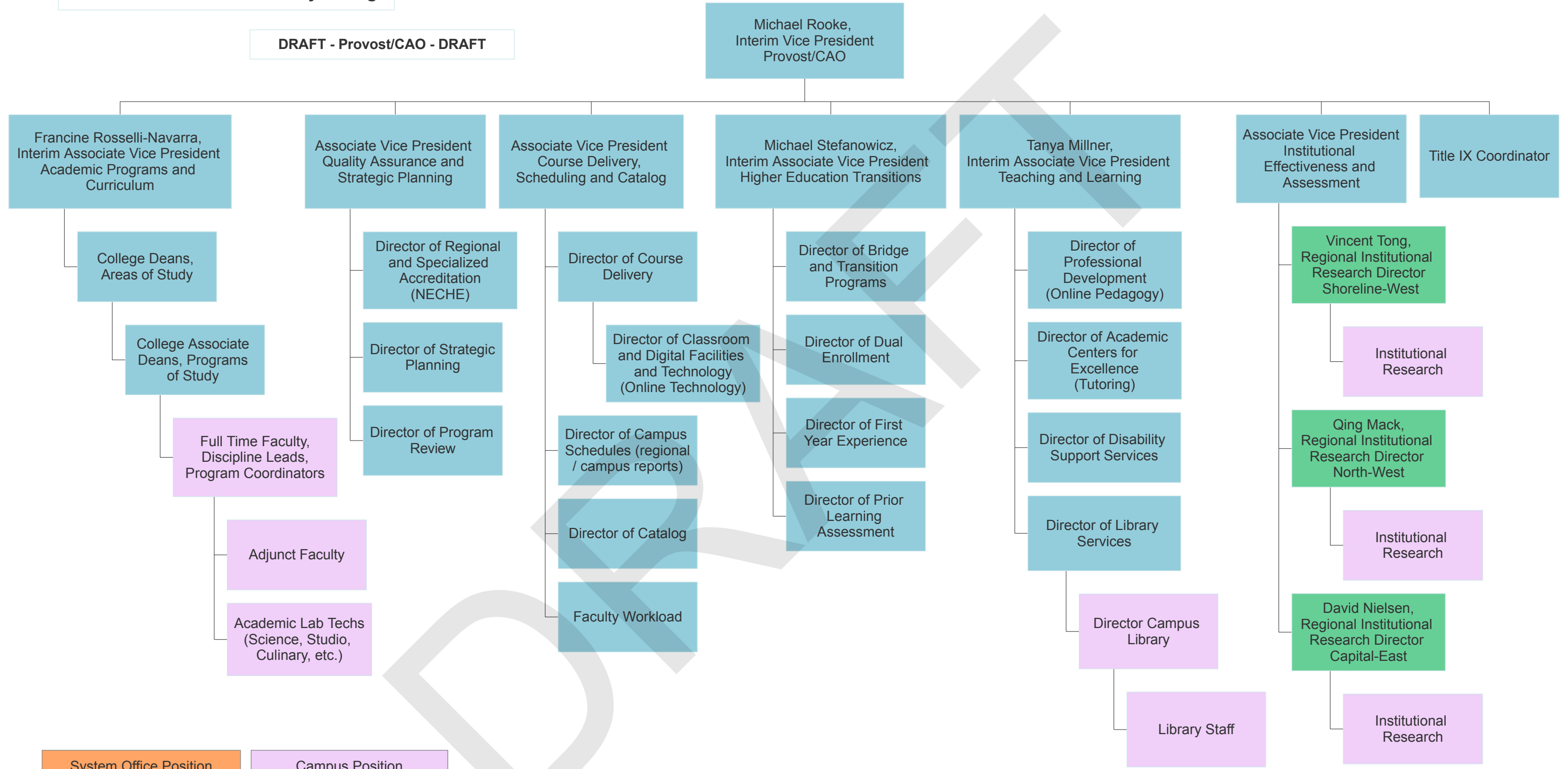


	Reporting Lines
	Relationship Lines
	System Office Position
	Campus Position
	College Office Position, College Oversight
	Regional Position, Regional Oversight

*Note that administrative support and other classified staff are not represented in this draft but will be included across the final college structure.

Connecticut State Community College

DRAFT - Provost/CAO - DRAFT

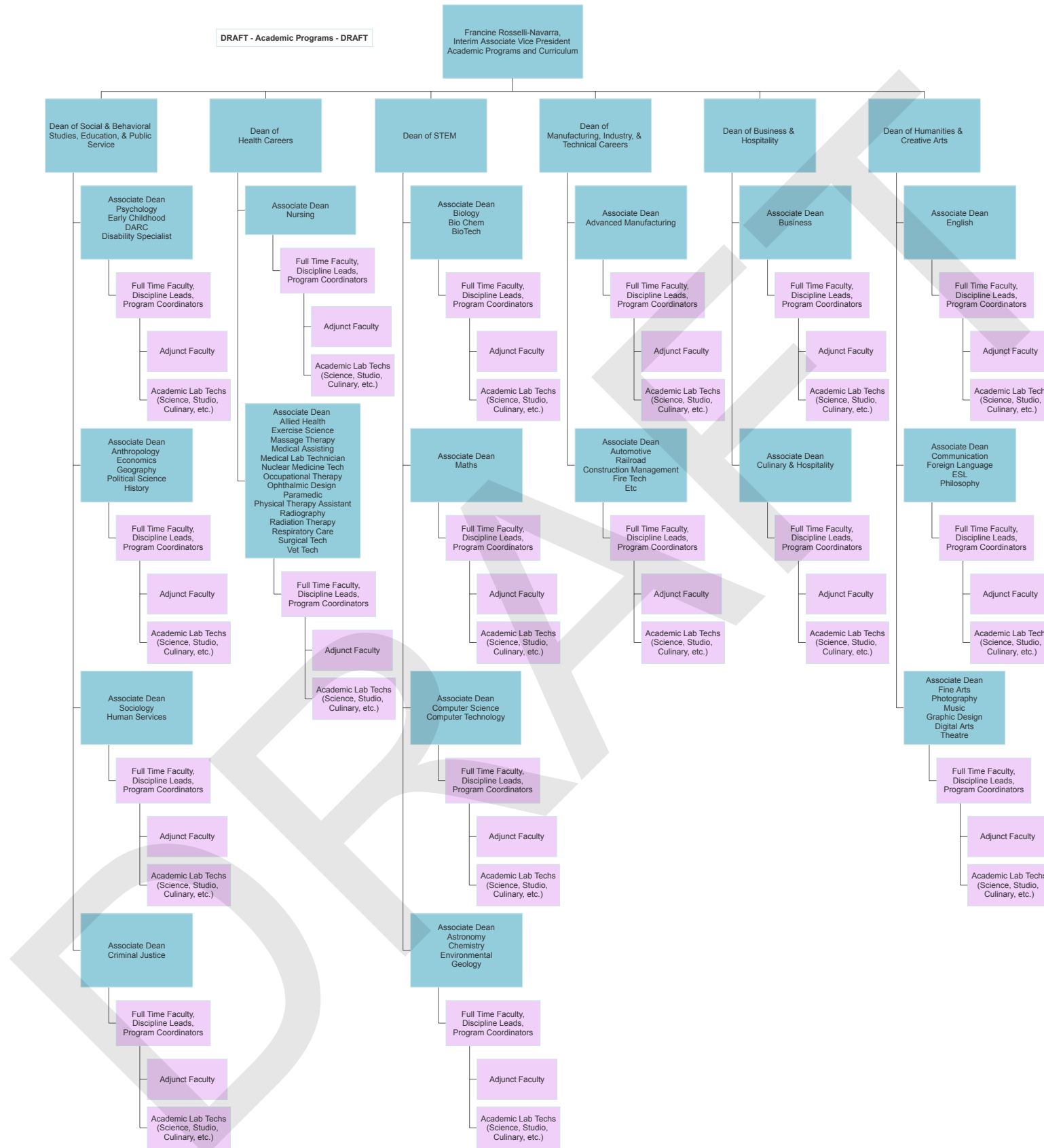


System Office Position	Campus Position
College Office Position, College Oversight	Regional Position, Regional Oversight

*Note that administrative support and other classified staff are not represented in this draft but will be included across the final college structure.

Connecticut State Community College

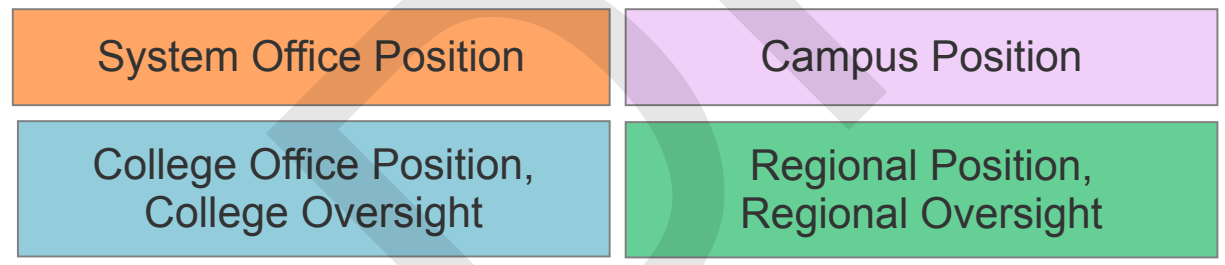
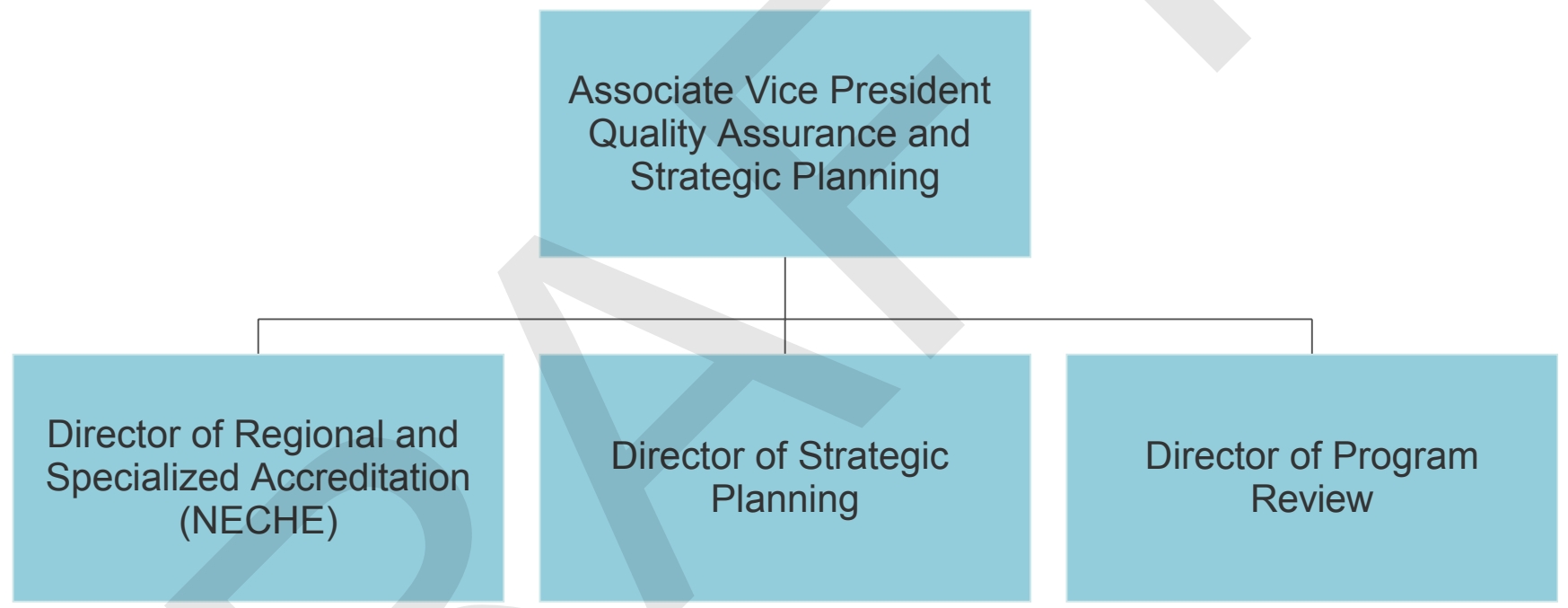
DRAFT - Academic Programs - DRAFT



*Note that administrative support and other classified staff are not represented in this draft but will be included across the final college structure.

Connecticut State Community College

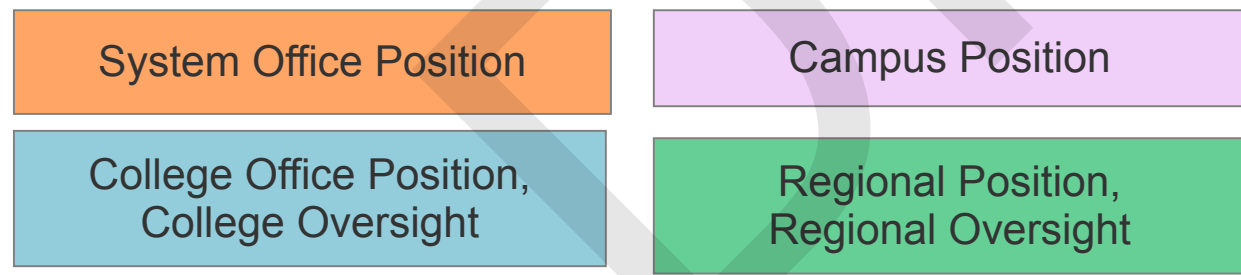
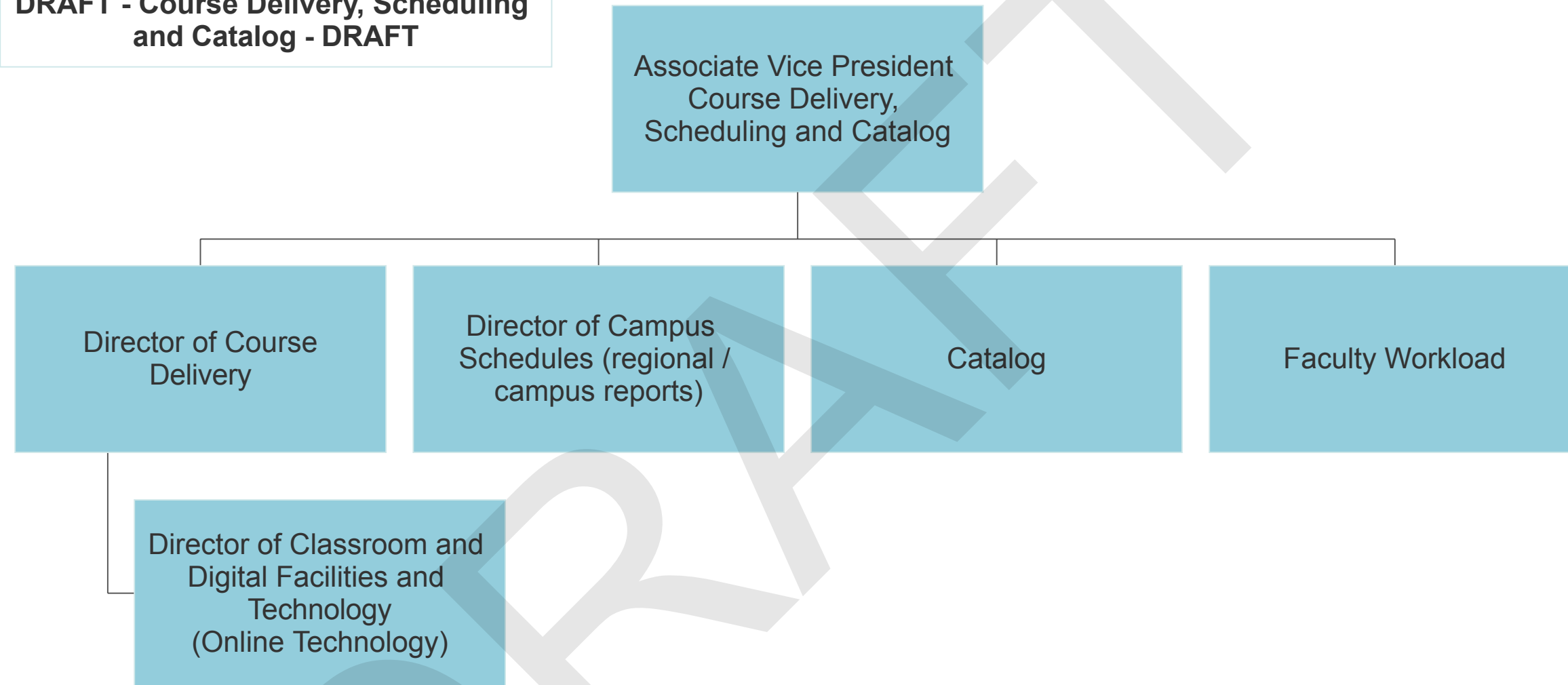
DRAFT - Quality Assurance and Strategic Planning - DRAFT



*Note that administrative support and other classified staff are not represented in this draft but will be included across the final college structure.

Connecticut State Community College

DRAFT - Course Delivery, Scheduling and Catalog - DRAFT



*Note that administrative support and other classified staff are not represented in this draft but will be included across the final college structure.

Connecticut State Community College

DRAFT - Higher Education Transitions - DRAFT

Michael Stefanowicz,
Interim Associate Vice President
Higher Education Transitions

Director of Bridge and
Transition Programs

Director of Dual
Enrollment

Director of First Year
Experience

Director of Prior Learning
Assessment

System Office Position

Campus Position

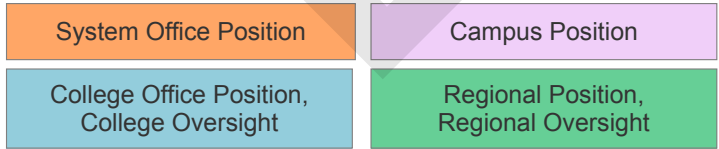
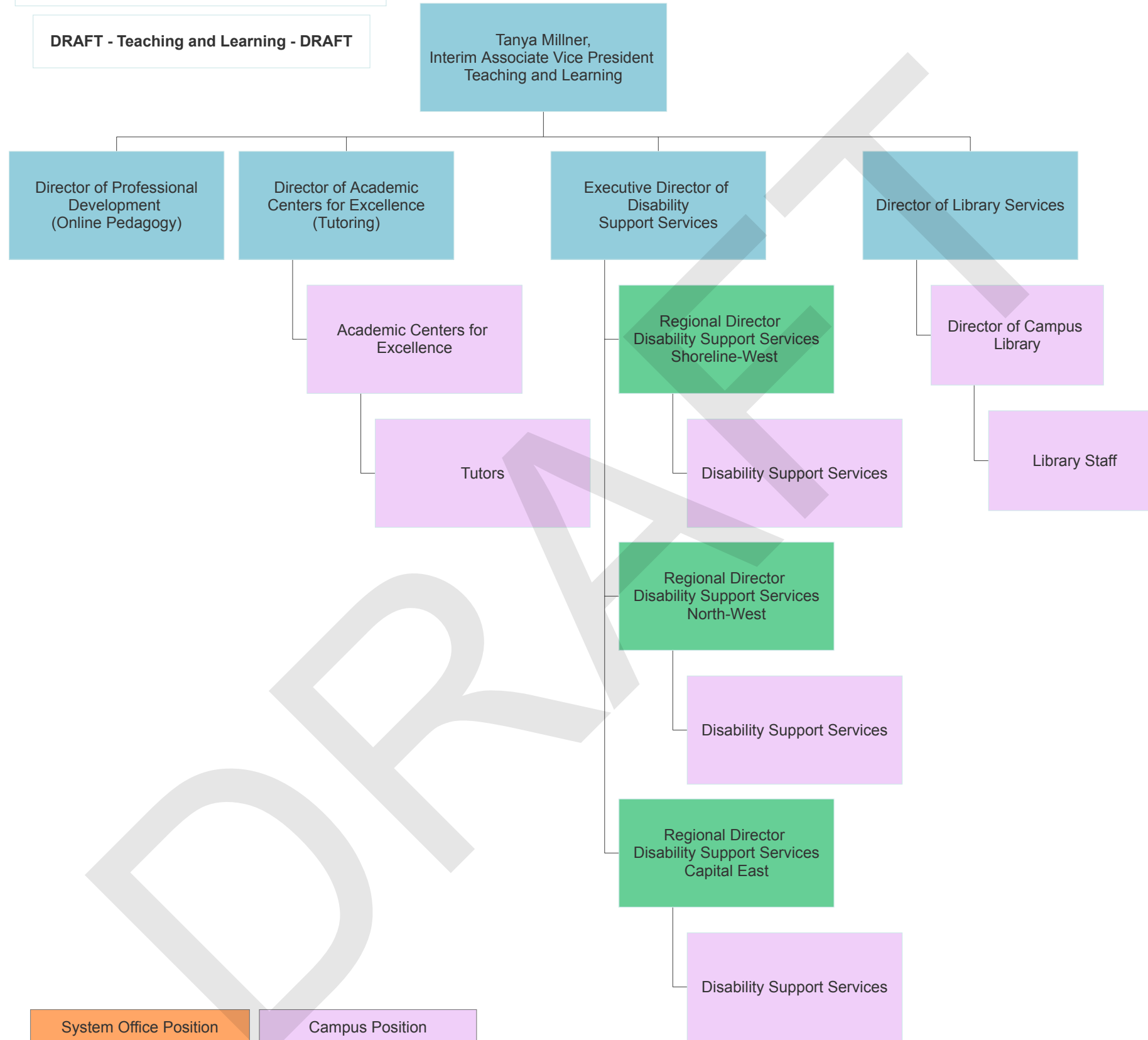
College Office Position,
College Oversight

Regional Position,
Regional Oversight

*Note that administrative support and other classified staff are not represented in this draft but will be included across the final college structure.

Connecticut State Community College

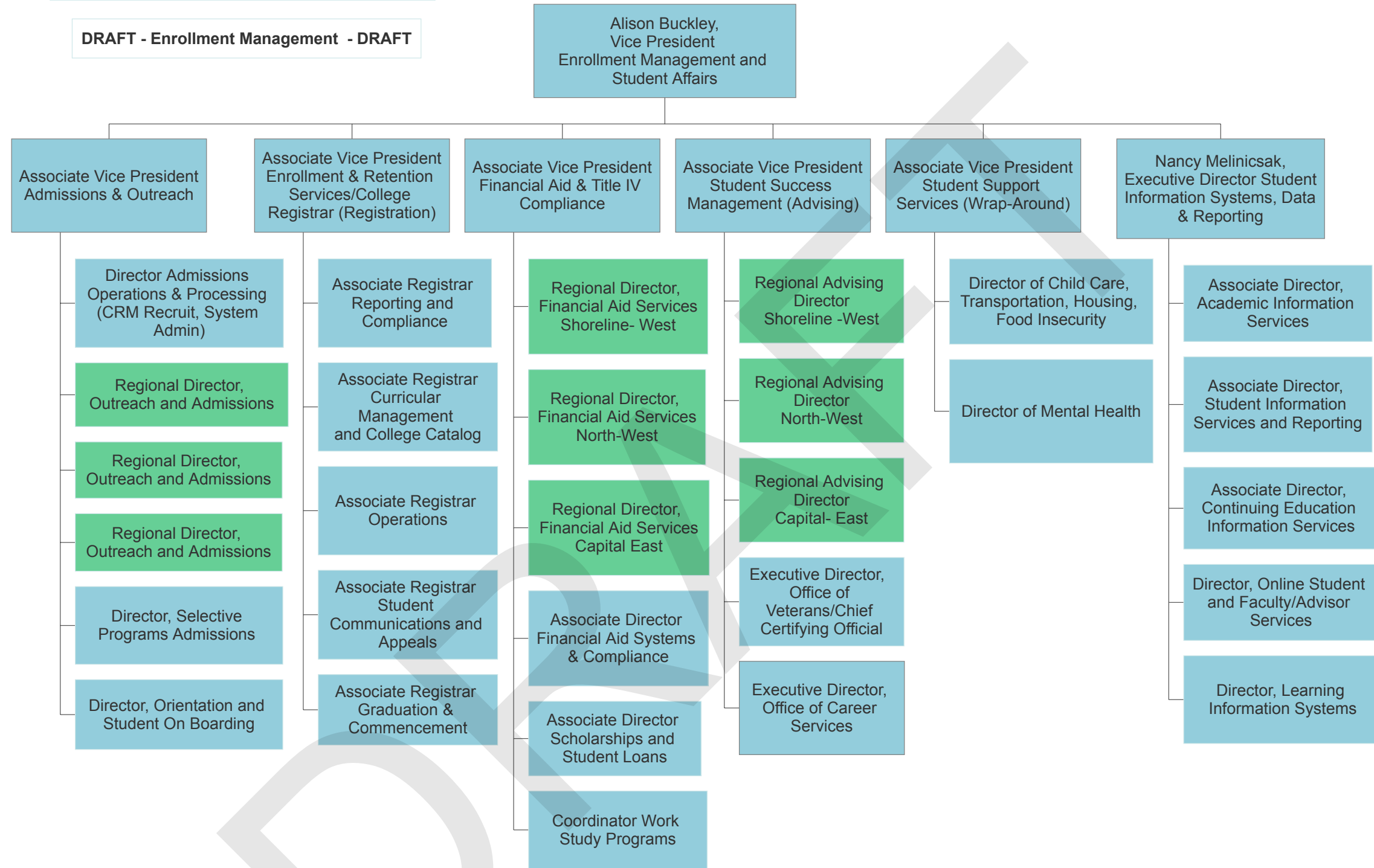
DRAFT - Teaching and Learning - DRAFT



*Note that administrative support and other classified staff are not represented in this draft will be included across the final college structure.

Connecticut State Community College

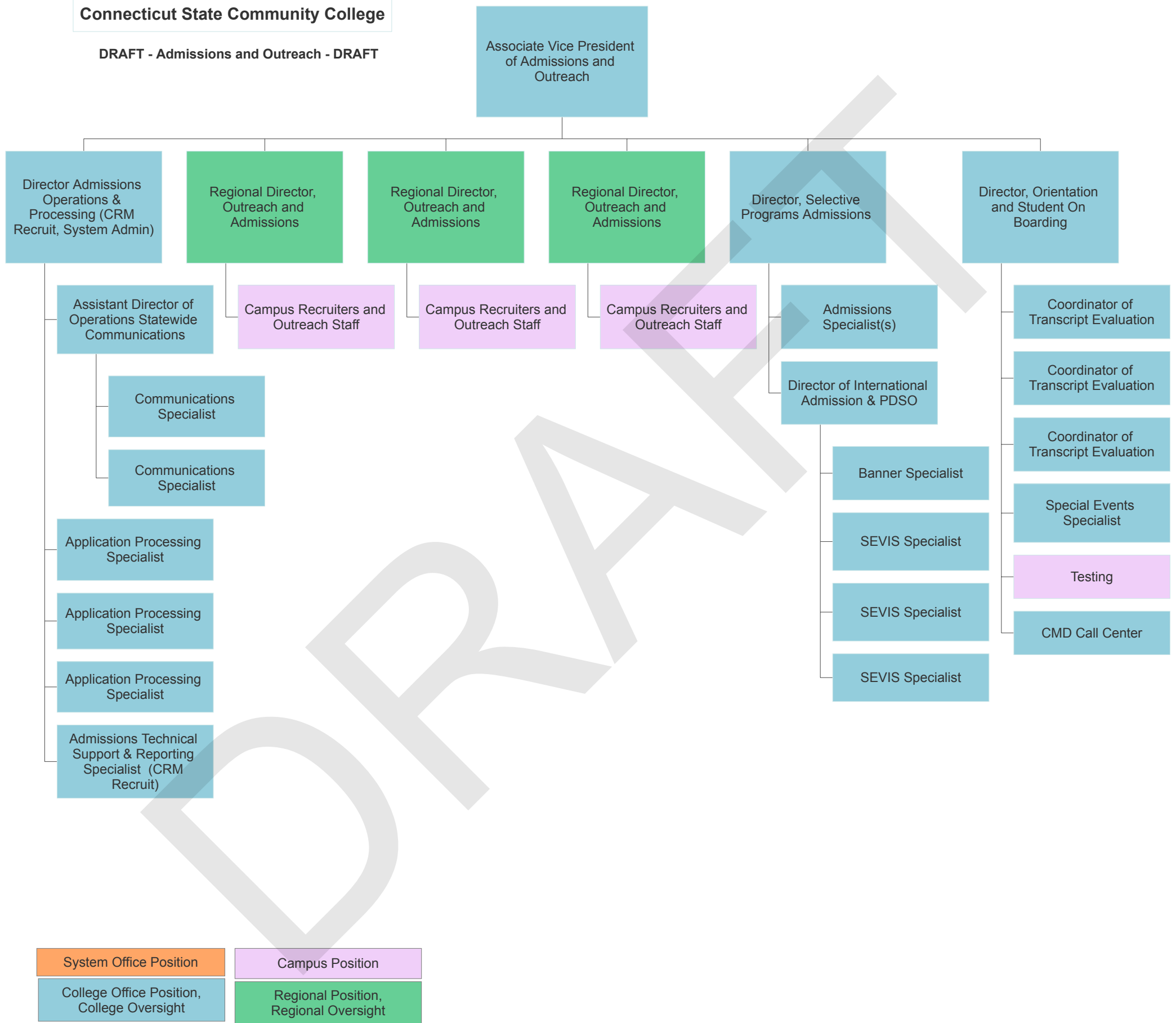
DRAFT - Enrollment Management - DRAFT



*Note that administrative support and other classified staff are not represented in this draft but will be included across the final college structure.

Connecticut State Community College

DRAFT - Admissions and Outreach - DRAFT

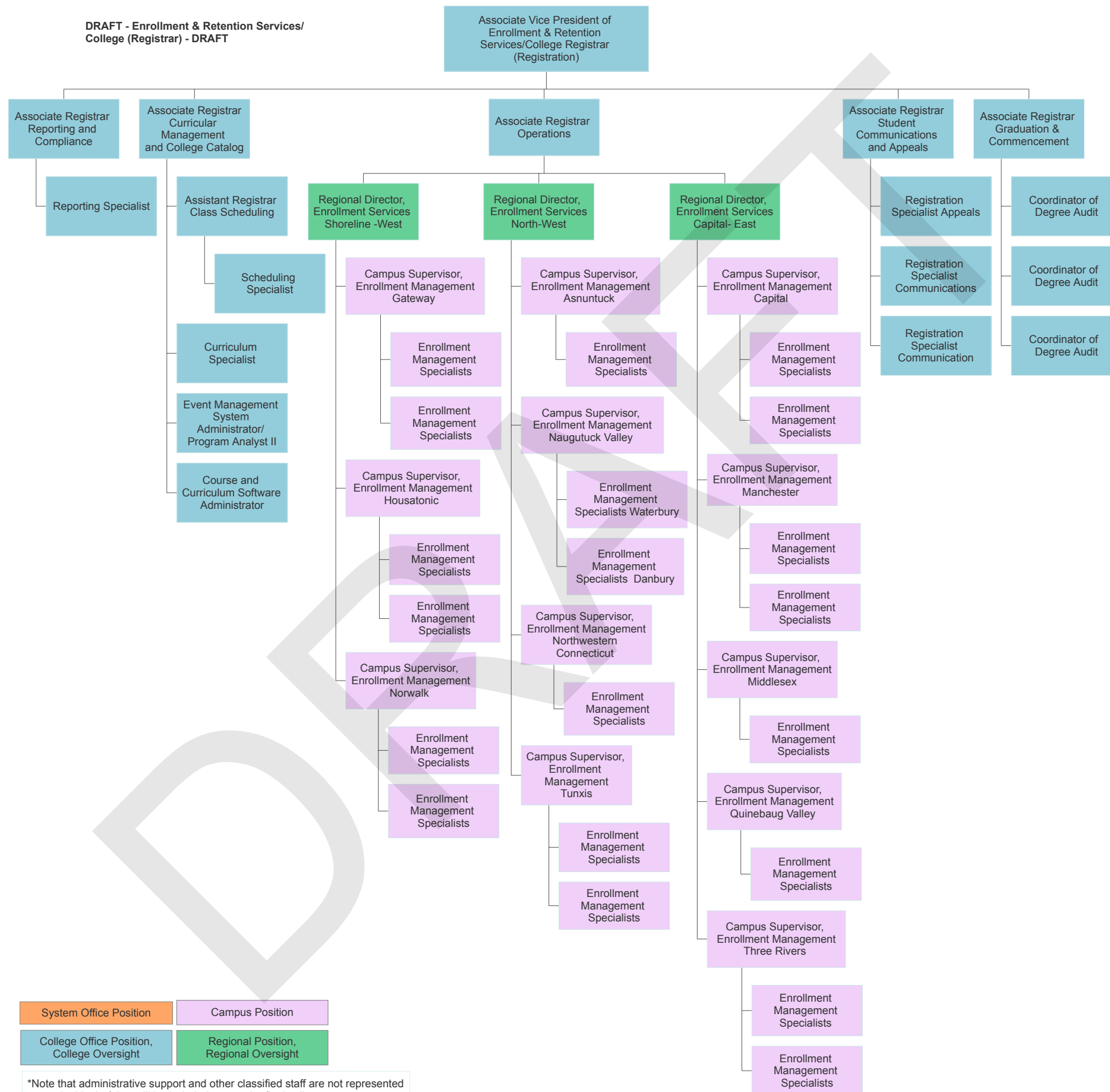


System Office Position	Campus Position
College Office Position, College Oversight	Regional Position, Regional Oversight

*Note that administrative support and other classified staff are not represented in this draft but will be included across the final college structure.

Connecticut State Community College

**DRAFT - Enrollment & Retention Services/
College (Registrar) - DRAFT**

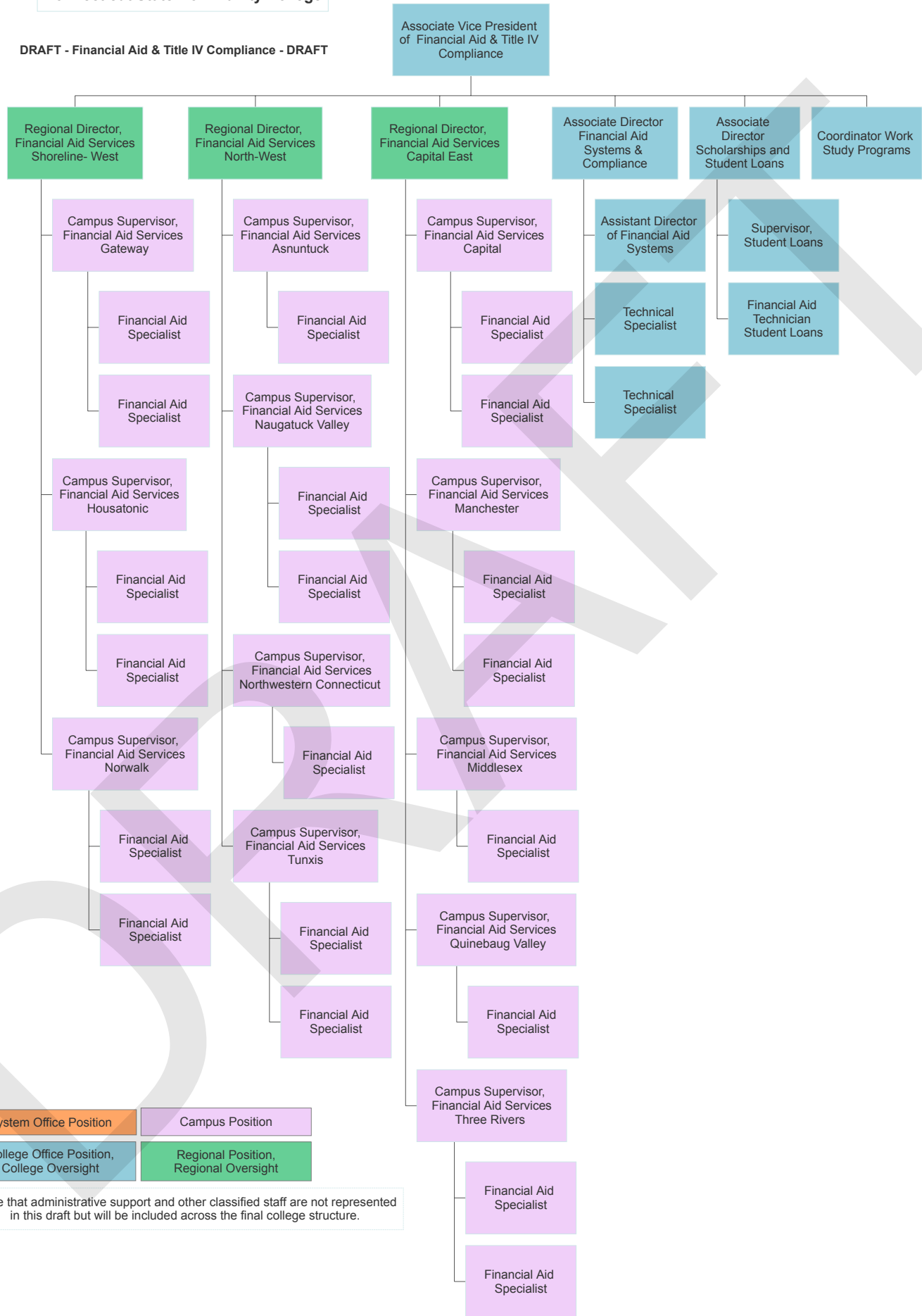


System Office Position	Campus Position
College Office Position, College Oversight	Regional Position, Regional Oversight

*Note that administrative support and other classified staff are not represented in this draft but will be included across the final college structure.

Connecticut State Community College

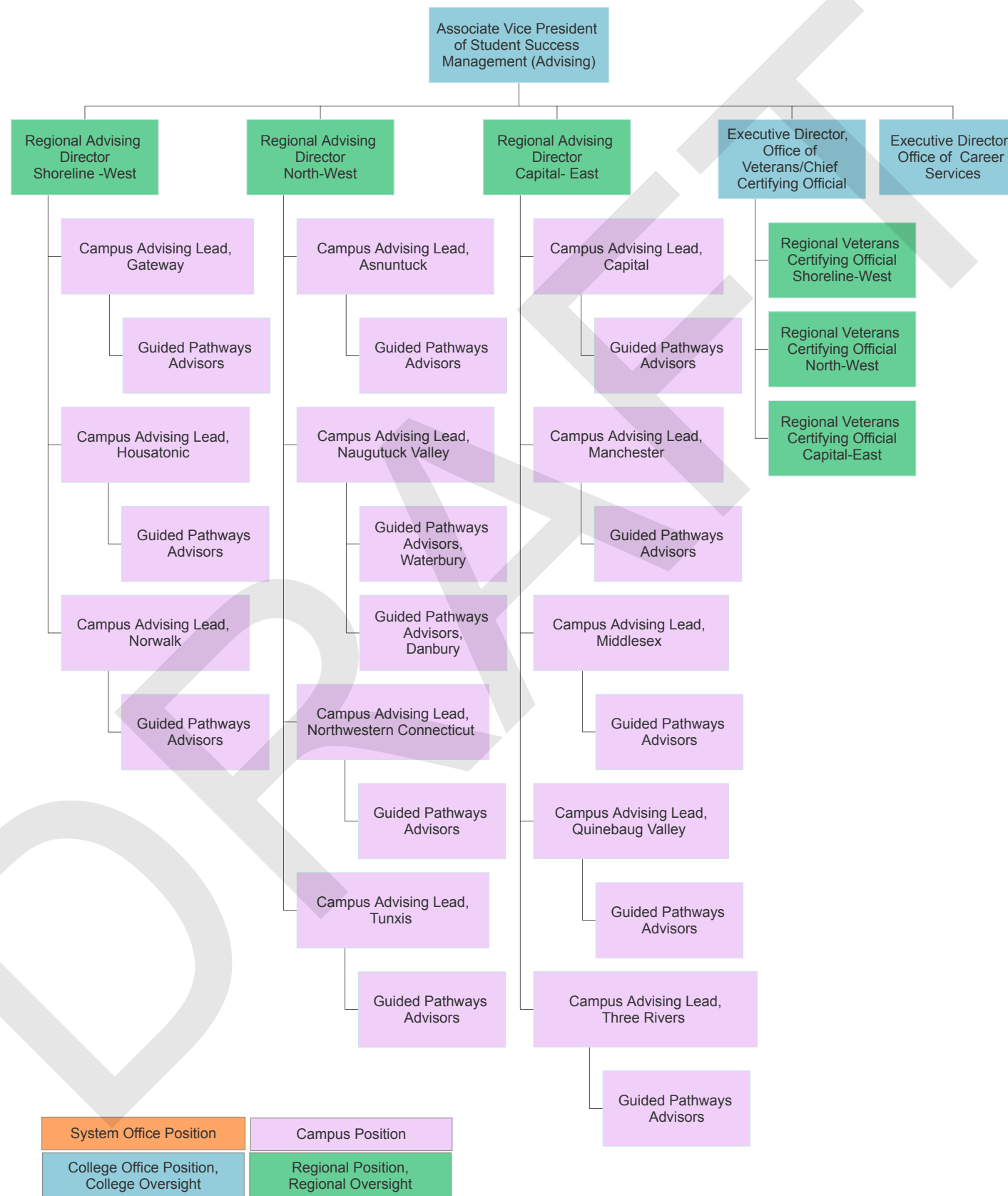
DRAFT - Financial Aid & Title IV Compliance - DRAFT



*Note that administrative support and other classified staff are not represented in this draft but will be included across the final college structure.

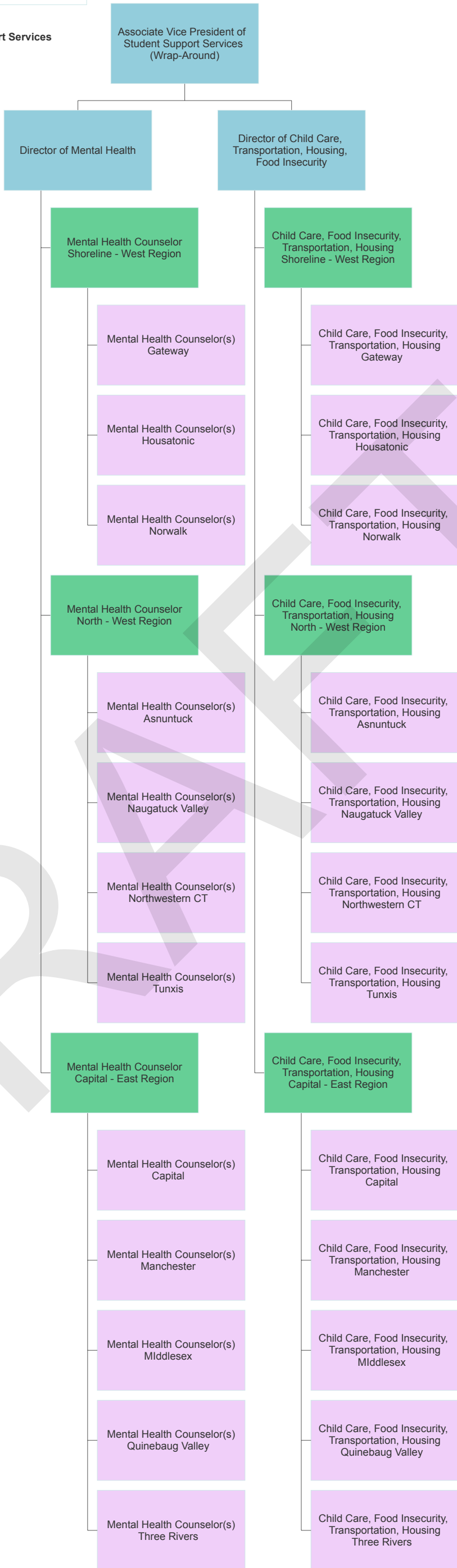
Connecticut State Community College

DRAFT - Student Success Management (Advising)- DRAFT



*Note that administrative support and other classified staff are not represented in this draft but will be included across the final college structure.

DRAFT - Student Support Services
(Wrap-Around) - DRAFT

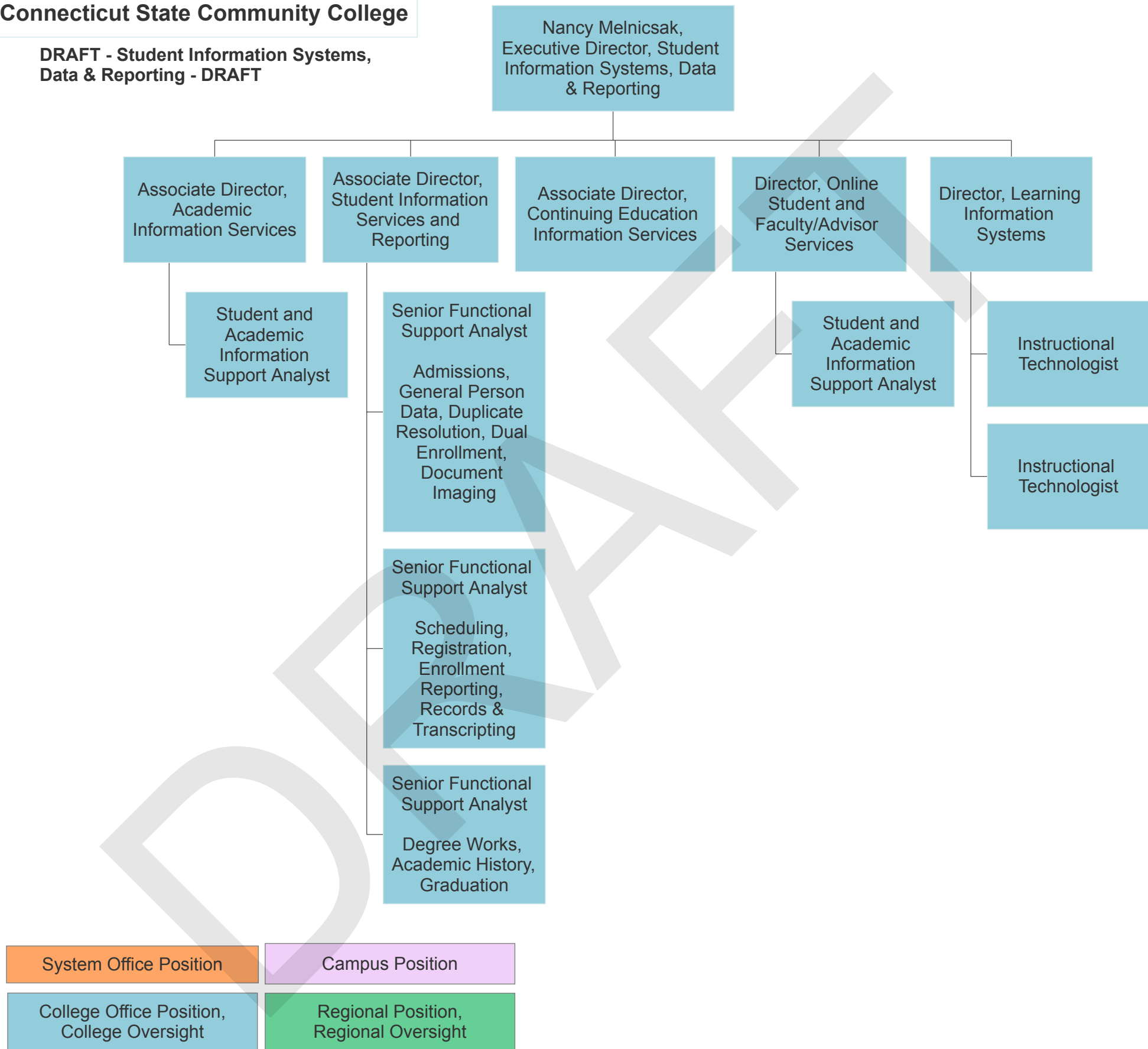


System Office Position	Campus Position
College Office Position, College Oversight	Regional Position, Regional Oversight

*Note that administrative support and other classified staff are not represented in this draft but will be included across the final college structure.

Connecticut State Community College

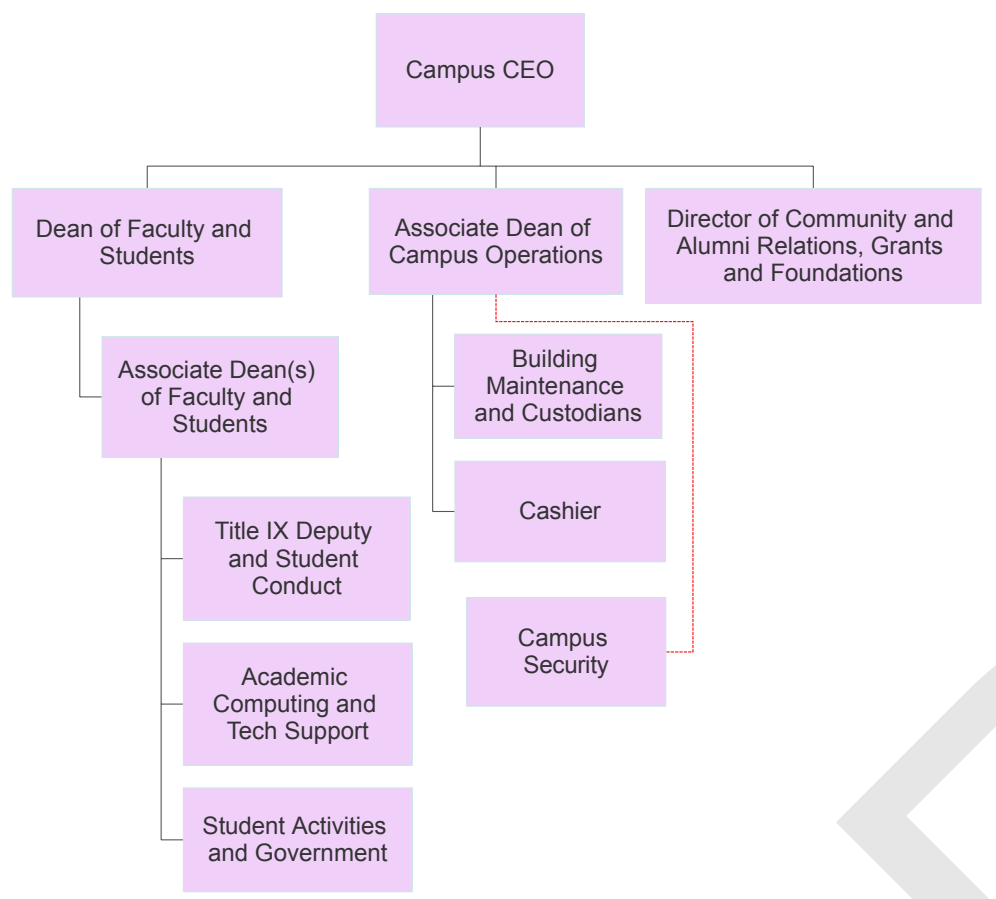
**DRAFT - Student Information Systems,
Data & Reporting - DRAFT**



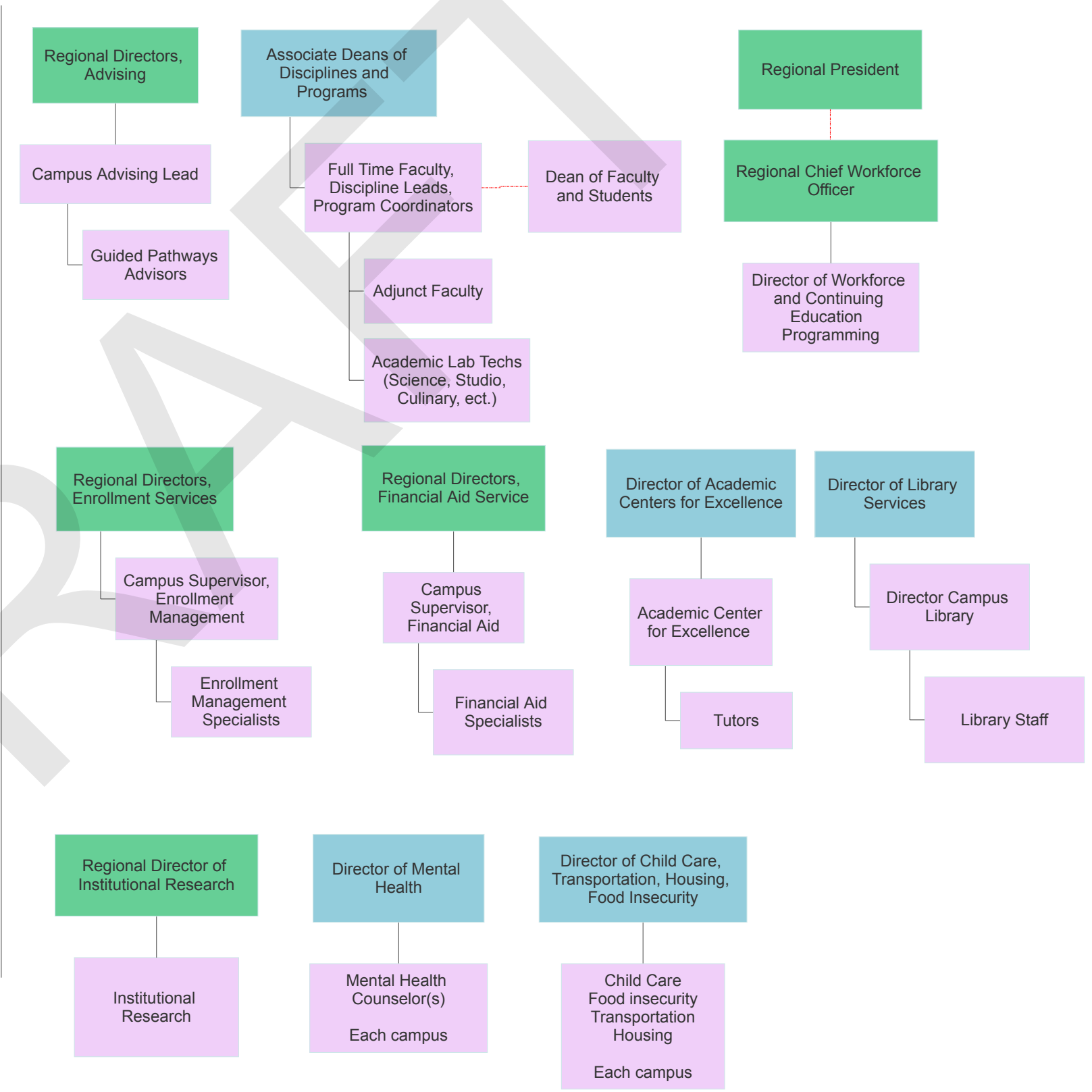
System Office Position	Campus Position
College Office Position, College Oversight	Regional Position, Regional Oversight

*Note that administrative support and other classified staff are not represented in this draft but will be included across the final college structure.

Campus Team with Direct Report to the CEO



Campus Team with Direct Report to the College Leadership



	Reporting Lines
	Relationship Lines
	System Office Position
	Campus Position
	College Office Position, College Oversight
	Regional Position, Regional Oversight

*Note that administrative support and other classified staff are not represented in this draft but will be included across the final college structure.