

BOR: The Challenge and the Opportunity

BOR Meeting, March 15, 2012



CONNECTICUT STATE
COLLEGES & UNIVERSITIES

BOARD OF REGENTS FOR HIGHER EDUCATION

Educational success as a driver of economic success

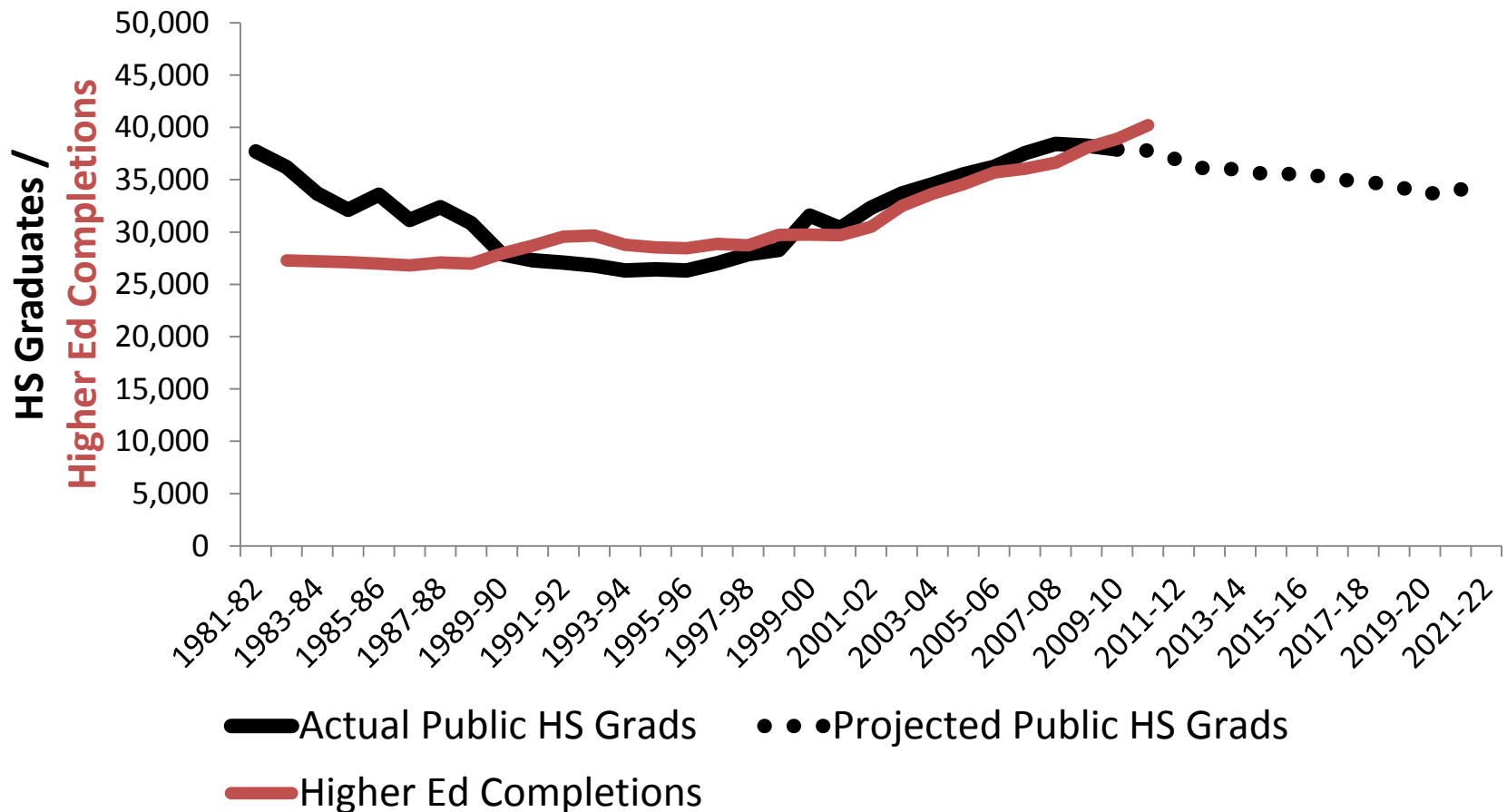
If state policymakers want to improve their state's economic performance, then they should concentrate on effective ways of boosting their stock of knowledge.

-- Federal Reserve Bank of Cleveland study of differences in state income levels

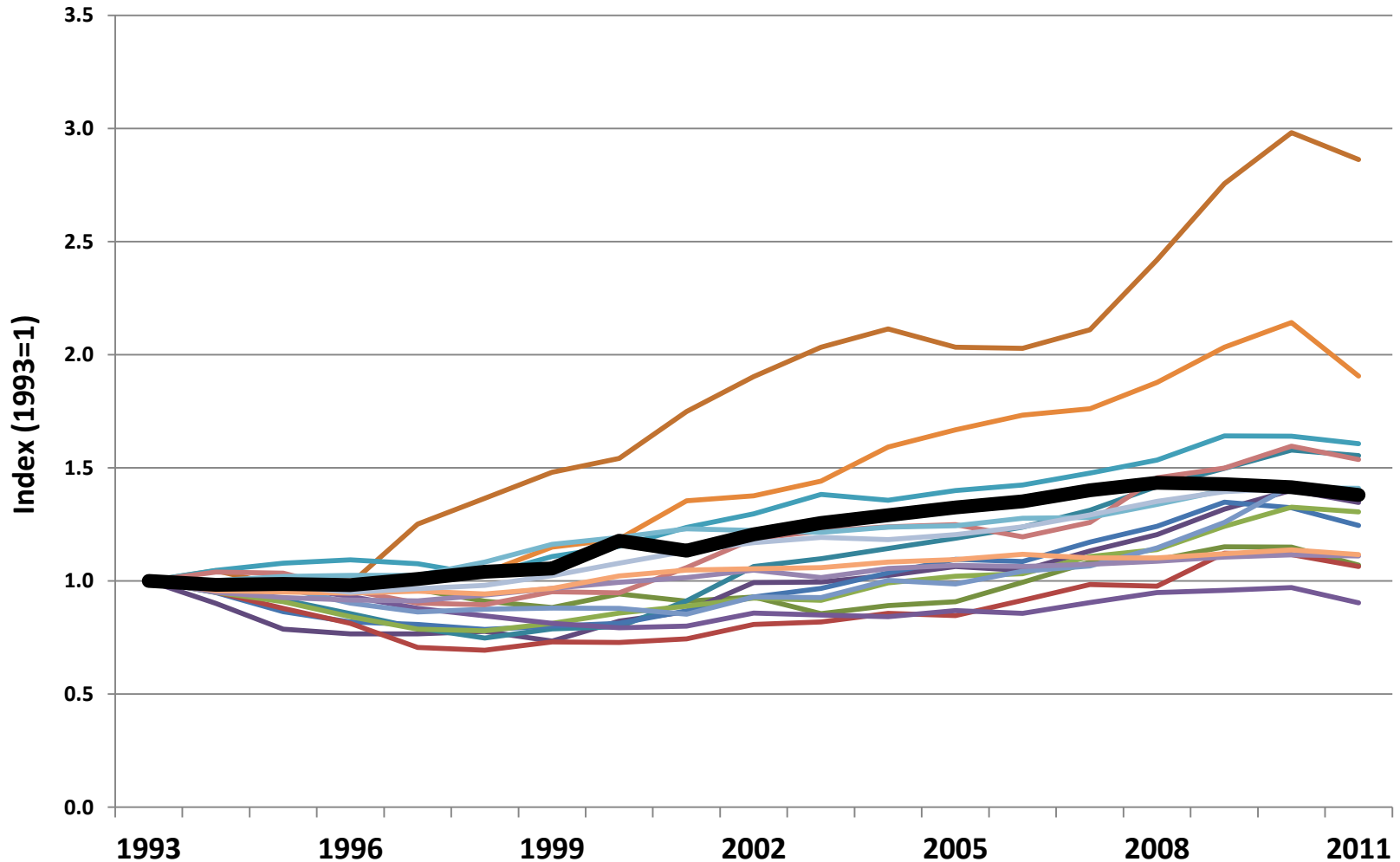
Connecticut's Challenge

- Our stock of knowledge is in competitive decline
 - #1 in 1990
 - #4 in 2000
 - #7 in 2010
- States passing or gaining ground:
 - MA, NY, NJ, NH, MD, MN

Recent increases in completions simply reflect demographic trends



Enrollment generally tracks high school demographics



Board of Regents' Opportunity

Our students, faculty and institutions make ConnSCU the only higher education organization big enough to increase Connecticut's educational attainment at a statewide population level.

BOR is the biggest player in a fragmented market

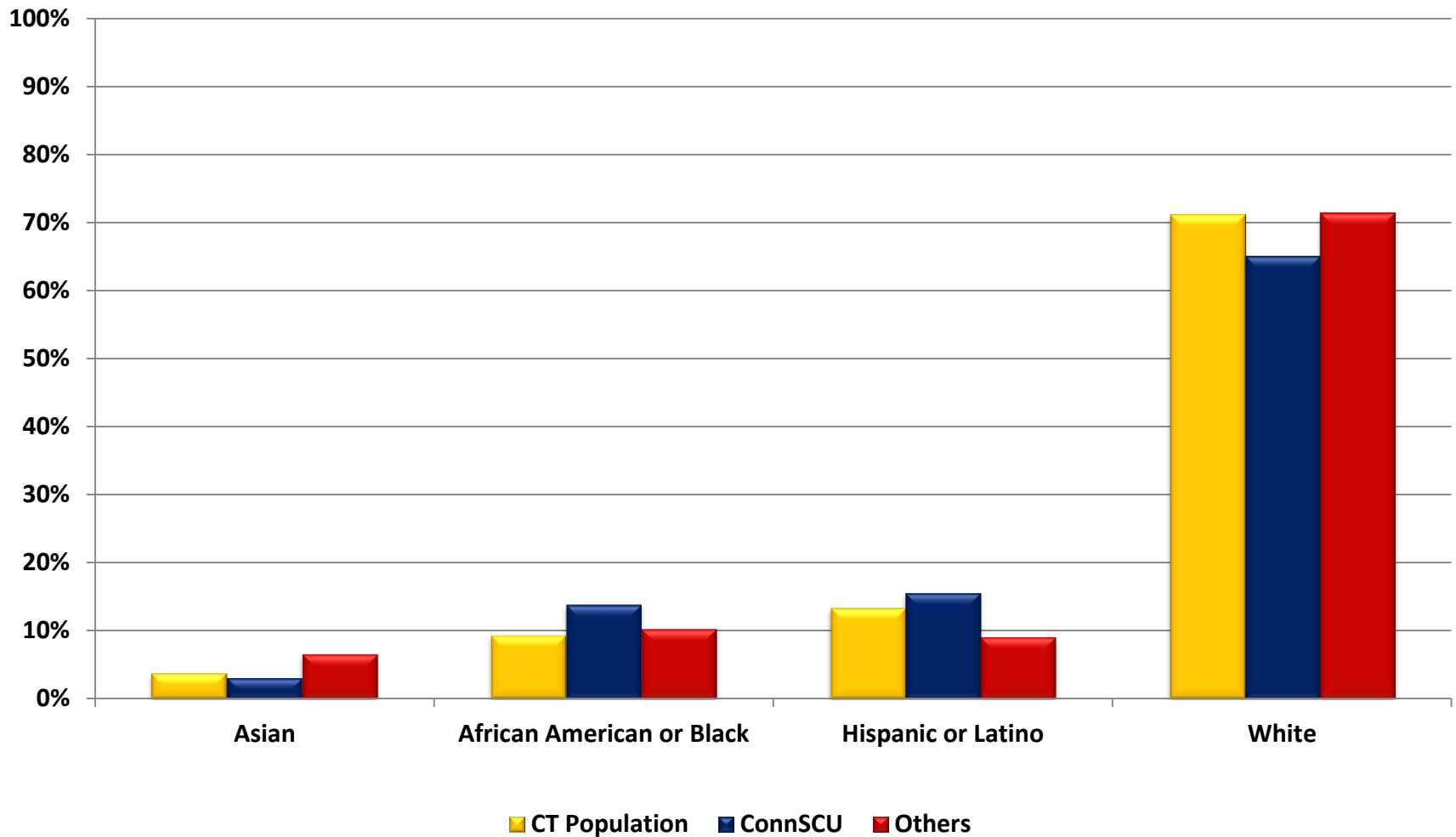
CT Enrollment

Public & Private Statewide FTE	154,221
Board of Regents FTE	63,915
Percent BOR	41%

CT High School Class of 2004

Total HS Graduates	35,671
Enrolled in Post-Secondary in Fall	20,468
Enrolled in BOR Institution	7,999
Percent of Enrollees at BOR	39%

We serve a more diverse population



We serve CT residents

Geographic Origin of ConnSCU Students (Fall 2011)

	In-State	Out-of-State
CSU	94%	6%
CC	99%	1%
COSC	71%	29%
Total	96%	4%

Board of Regents' challenge

- Most of our students do not earn a degree or certificate

Completions of HS Class of 2004

- After starting at a CSU:

61 % completed in 6 years

- **47%** earned a BA from the CSU they entered
- **9%** earned a BA from some other institution
- **5%** earned an Associate's degree or certificate from some other institution

- After starting at a CC:

28 % completed in 6 years

- **9%** earned a credential from the CC they entered within 3 years
- **10%** earned a credential from the CC they entered within 3-6 years
- **9%** completed a credential from another institution within 6 years

Student success rates vary significantly by sector

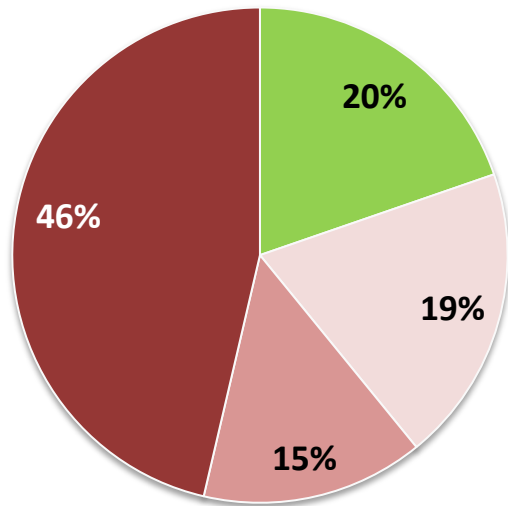
Type of Institution	<u>CT Class of 2004 HS graduates</u>		
	# Enrolled	% Enrolled	Graduated 6 years later
US News National Universities & National Colleges Ranked 1-50	1,870	9%	95%
US News National Universities & National Colleges Ranked 51-100 Includes: UConn	4,120	20%	83%
US News Additional Institutions Ranked or Identified Includes: COSC & CSU's	8,887	43%	68%
Institutions not Ranked or Identified by US News Includes: Community Colleges	5,591	27%	30%

Issues

- College readiness
- Time to degree/certificate
- Student mobility across institutions
- Affordability and efficiency
- Innovation
- Quality

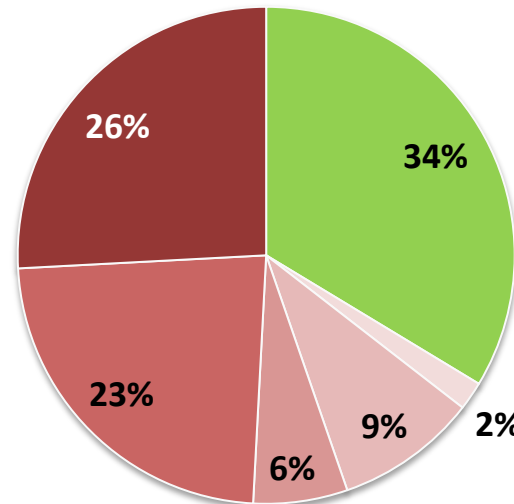
Minority of freshmen are ready for college level work in Math and English

Community Colleges



- College Level, 1264
- Dev. English, 1244
- Dev. Math, 932
- Both English and Math, 2972

State Universities

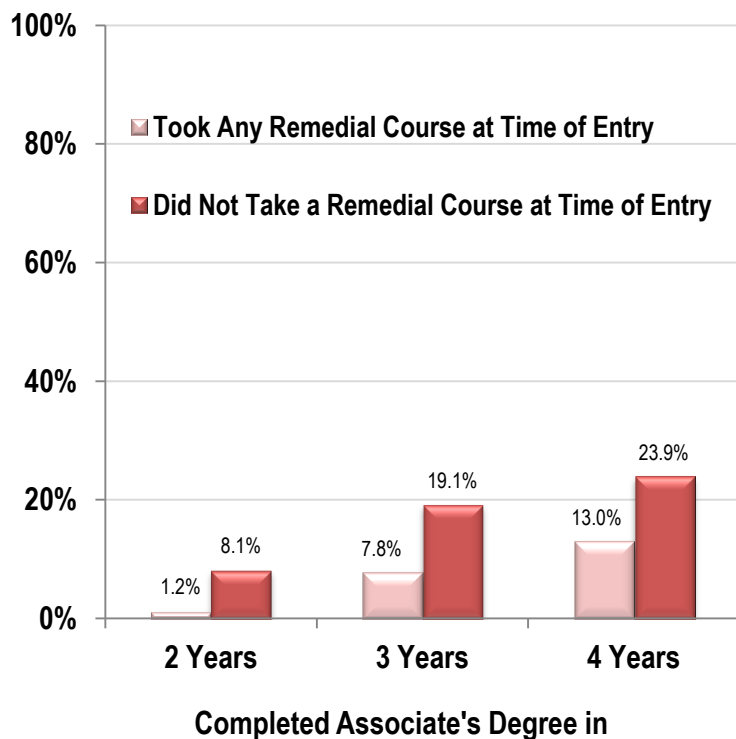


- College Level: 1,202
- Rem. English: 66
- Dev. English: 329
- Remedial Math: 219
- Developmental Math: 833
- Both English & Math: 923

Remediation reduces likelihood of graduation

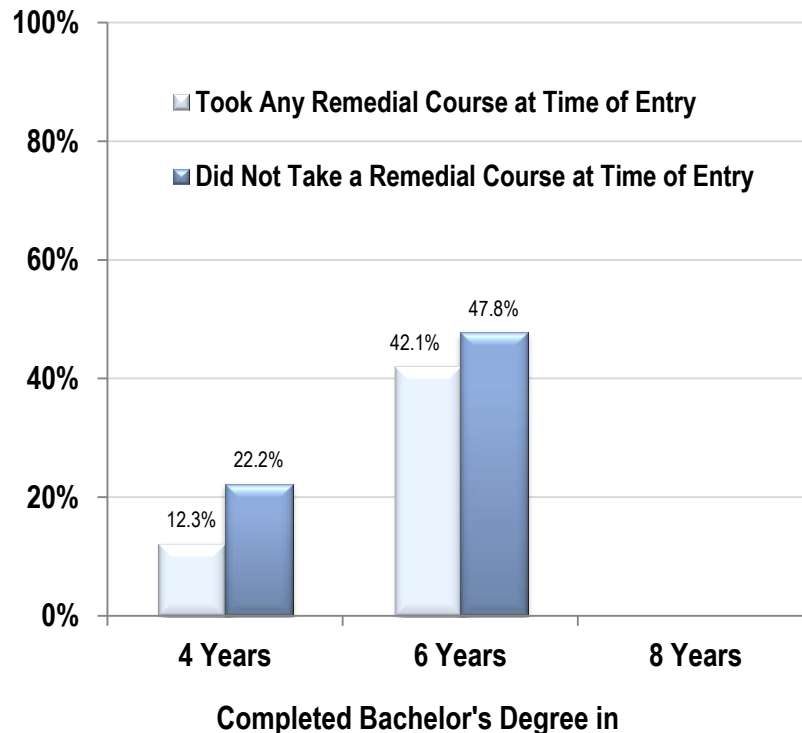
Associate's Degree Completion Rates

(First-Time, Full-Time Students
Entering in Fall 2006,
Community Colleges only)



Bachelor's Degree Completion Rates

(First-Time, Full-Time Students
Entering in Fall 2004,
CSU Campuses only)



Very few people graduate in the time frame for the degree sought

CC Associate Degree Seeking Students Entering Fall 2006

Entry Status	100% time (2 yrs)	150% time (3 yrs)	200% time (4 yrs)
Full-Time, First-Time	3%	11%	16%
Part-Time, First-Time	2%	4%	7%

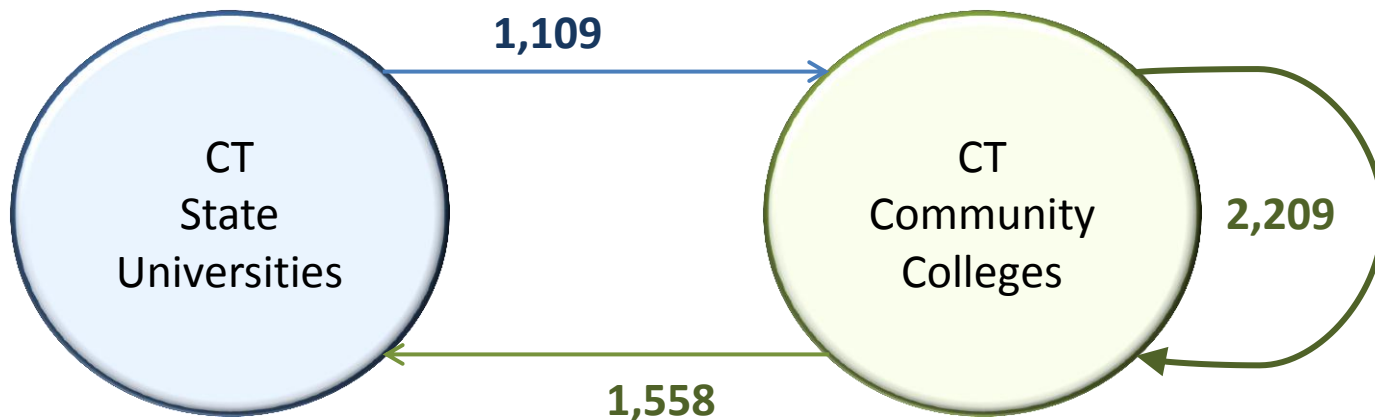
CSU Bachelor's Degree Seeking Students Entering Fall 2004

Entry Status	100% time (4 yrs)	150% time (6 yrs)
Full-Time, First-Time	19%	46%
Part-Time, First-Time	6%	18%

Our students move across institutions

In Fall 2010

- 1,109 went to a Community College from a CSU
- 1,558 went to a CSU from a Community College
- 2,209 went to a Community College from a different Community College



CT ranks 5th in spending per student but 45th in the share spent on instruction

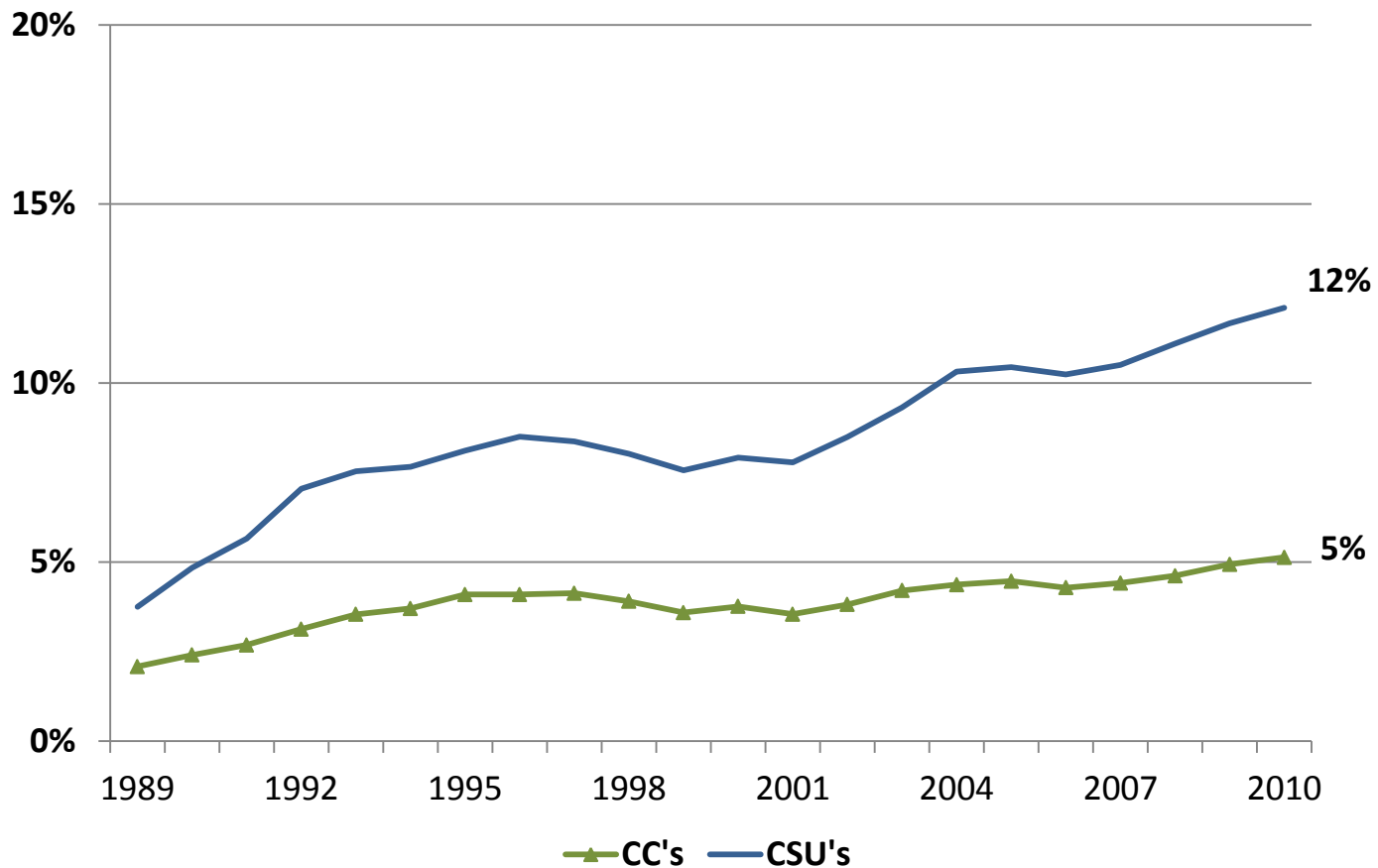
PUBLIC Masters			
State	E&R per FTE	Rank by E&R per FTE	Rank by % on instruction
NJ	\$14,392	5	32
CT	\$14,392	5	45
NY	\$14,095	7	12
PA	\$13,029	10	42
MD	\$12,309	13	44
MA	\$11,866	15	40
VA	\$11,200	20	16
Nation	\$11,355		
PUBLIC Associates			
State	E&R per FTE	Rank by E&R per FTE	Rank by % on instruction
MD	\$11,490	4	38
CT	\$11,236	5	48
NY	\$10,037	11	23
PA	\$9,891	12	47
MA	\$9,257	21	44
NJ	\$7,479	40	43
VA	\$7,009	46	19
Nation	\$8,346		

Cost per degree completion is high

PUBLIC Masters		
State	Cost (E&R) Per Completion	Rank
CT	\$61,787	6
NJ	\$53,101	17
NY	\$52,915	18
PA	\$50,935	21
MA	\$49,328	23
VA	\$49,113	24
MD	\$42,174	37
Nation	\$46,967	

PUBLIC Associates		
State	Cost (E&R) Per Completion	Rank
MD	\$67,479	2
CT	\$66,289	3
NY	\$61,006	8
PA	\$58,886	9
NJ	\$48,882	16
MA	\$47,105	17
VA	\$36,244	35
Nation	\$38,762	

Tuition & Fees are taking up a higher share of household income



Levers of change

- Move students into college level work quickly
- Graduate more students within 2 and 4 years
- Increase success rates for transfer students
- Focus resources on instruction
- Set system goals for innovation
- Demonstrate program quality and relevance