

CT State Informational Webinar Series

Governance & Brief Overview of Academic Program Areas

CT STATE
COMMUNITY COLLEGE

Introduction & Overview



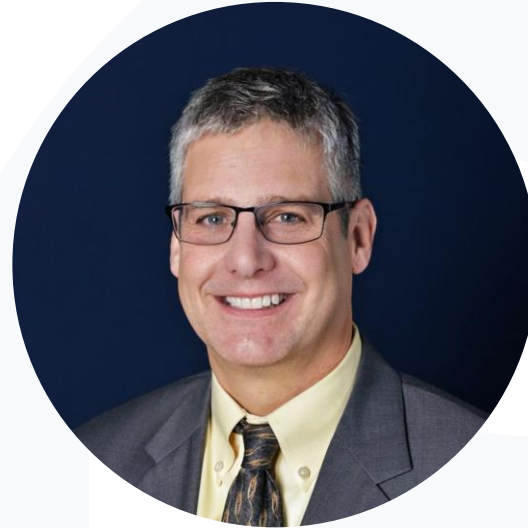
Dr. Miah LaPierre-Dreger
Interim Provost & Vice President
Academic Affairs, CT State

Presenters



Amy Feest

Associate Vice President of
Academic Programs &
Curriculum, CT State



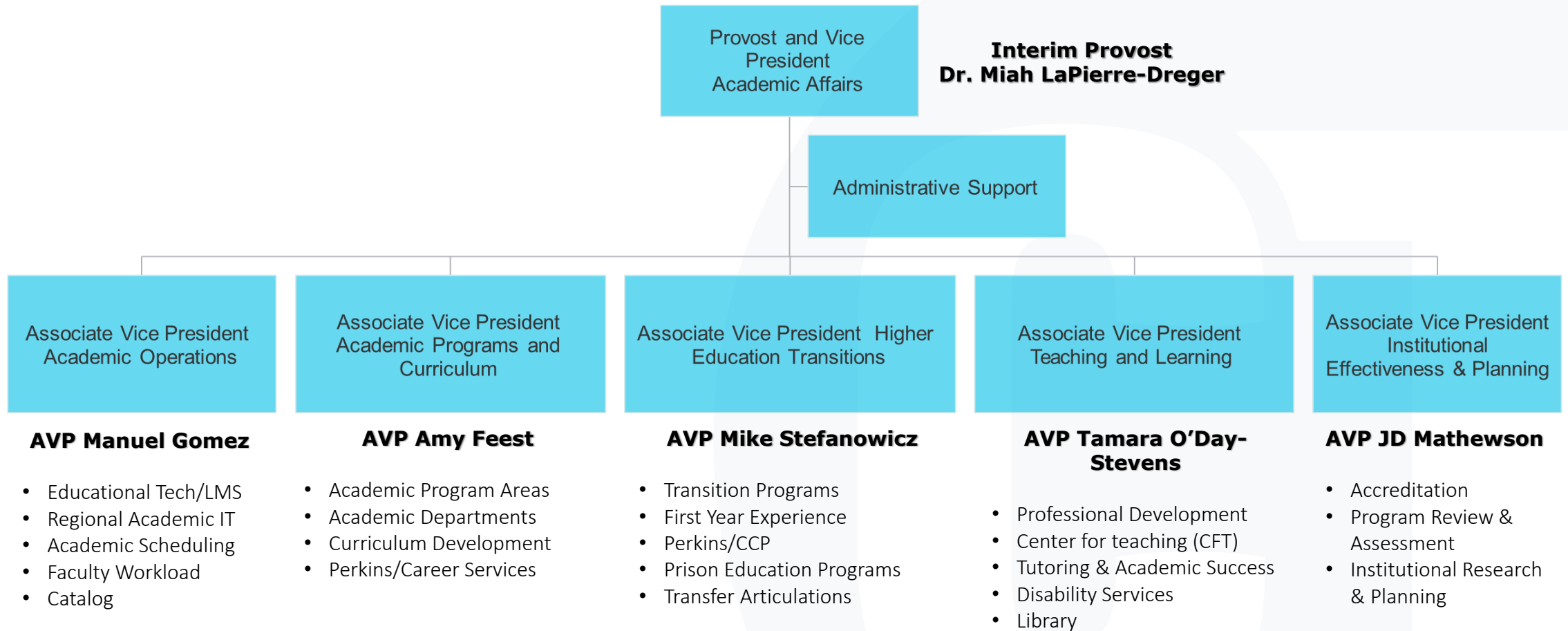
Mike Stefanowicz

Interim Associate Vice
President of Higher Education
Transitions, CT State

Academic Webinar Topics:

March 22	Curriculum Alignment, General Education, & One College Catalog
March 29 (Today)	Governance & Brief Overview of Academic Program Areas
April 5	Teaching and Learning, Tutoring, & Library
April 12	Academic Operations, Scheduling, & Blackboard
April 19	Institutional Effectiveness and Planning, Assessment, & Institutional Research
April 26	Deep Dive into Academic Program Areas and Departments

Academic Affairs Leadership



Governance

What is Shared Governance?

- Currently the BOR has recognized that *Shared Governance* can be conceptualized as:

*"Consonant with the mission, vision and goals of the CSCU System, the Board of Regents and the Faculty Advisory Committee recognize the importance of administration, faculty, staff, and student cooperation in contributing to the advancement of shared governance in the CSCU institutions. **Shared governance is defined as communication, collaboration, and mutual accountability between administration, faculty, staff, and students which advances excellence in the operation of CSCU institutions.**"*

(<https://www.ct.edu/regents/governanceawards>)

Governance

Governance Workgroup

- Charged with developing and recommending a governance structure that relates to academic and student affairs for the Connecticut State Community College
- This includes:
 - Defining shared governance
 - Determining eligibility for governance members
 - Describing membership [terms, voting rights, organizational placement, etc.]
 - Recommending policies for governance

Guiding Principles

The CT State Shared Governance Model will foster:

- A student-centered and equity-focused culture, which supports the development of the whole student, including learning inside and outside of the classroom.
- A voice for all members of the college, including students, faculty, staff, and administrators.
- Transparency and trust through clear communication.
- Freedom to respectfully debate or disagree without fear of recrimination.
- Representation from all campuses and constituencies.
- Participatory decision making, with the acknowledgement that the legislated authority for all decisions rests with the Connecticut Board of Regents for Higher Education (BOR).

Governance Workgroup Timeline

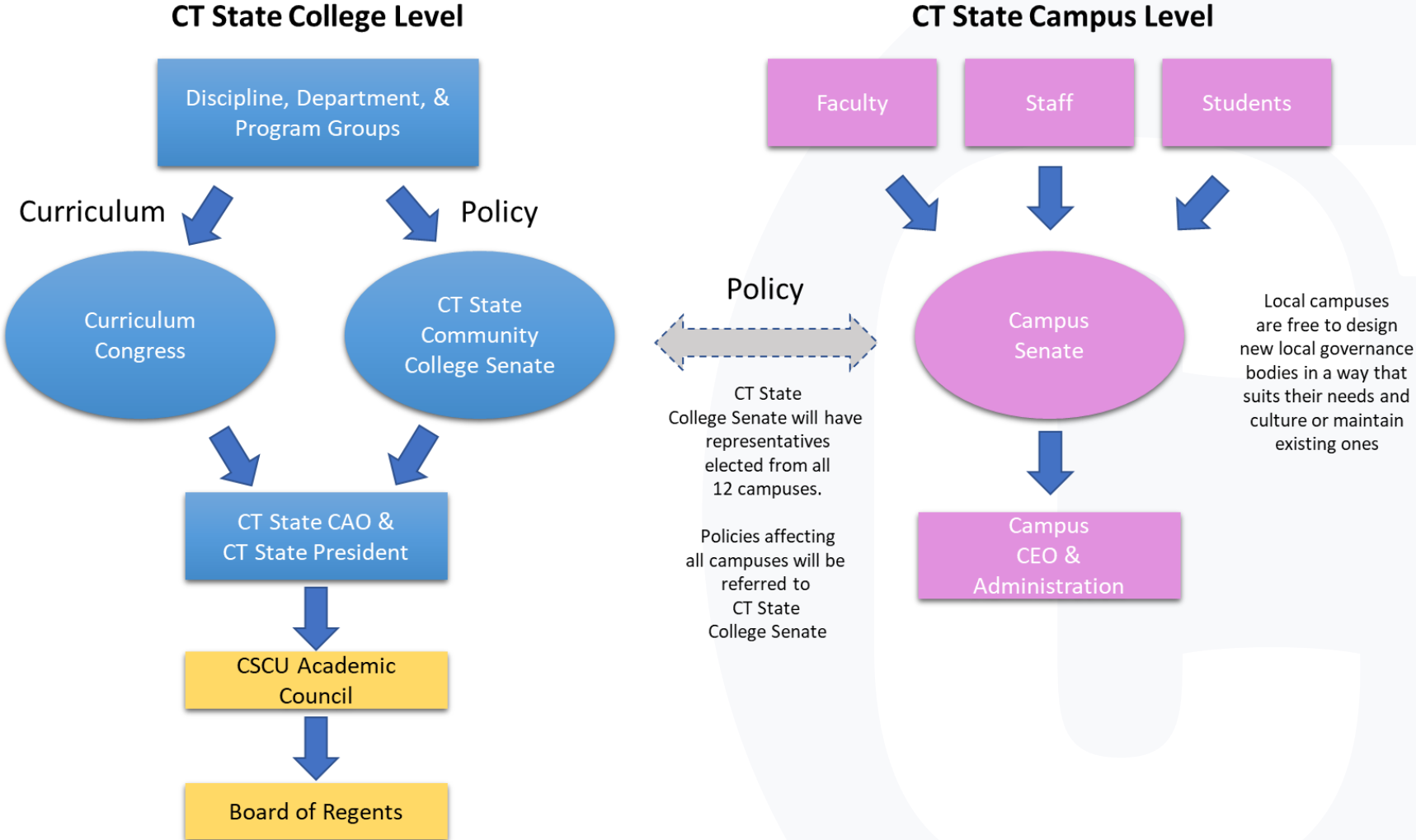
Spring 2018	Governance Workgroup formed as a sub-group of the Students First Academic and Student Affairs Consolidation Committee (SF ASA CC)
Fall 2018	Workgroup charged
Spring-Fall 2019	Guiding principles developed and existing campus governance structures reviewed
Spring-Fall 2020	Initial CT State governance model developed and refined
December 2020	Public comment period
Spring 2021	Feedback and changes incorporated into proposal
May 2021	Updated model shared for endorsement
Fall 2021	Feedback and changes incorporated into model
December 2021	SF ASA CC voted to approve model
February 2022	Updated model, including summary of changes, shared with campuses
March 2022	CCIC voted to approve model

Governance Implementation

2022-2023	New governance structure will be stood up for CT State
Fall 2022	Curriculum approval shifts from transitional governance process to new CT State governance structure
	Statewide departments elect governance representatives
	Initial convening of CT State governance bodies
	By-laws established
Spring 2023	Periodic convening of CT State governance bodies
	Curriculum modifications not included in prior APRC curriculum alignment process (<i>i.e.</i> , BOR approved by June 2022) must go through new governance approval process (<i>by March 2023</i>) for inclusion in official CT State 2022-23 College Catalog.
2023-2024	Regular convening of CT State governance bodies

Note: The Governance Model should be reviewed initially upon two full years of operation, and then at least every five years by the CT State Senate and the CT State President

New Shared Governance Model

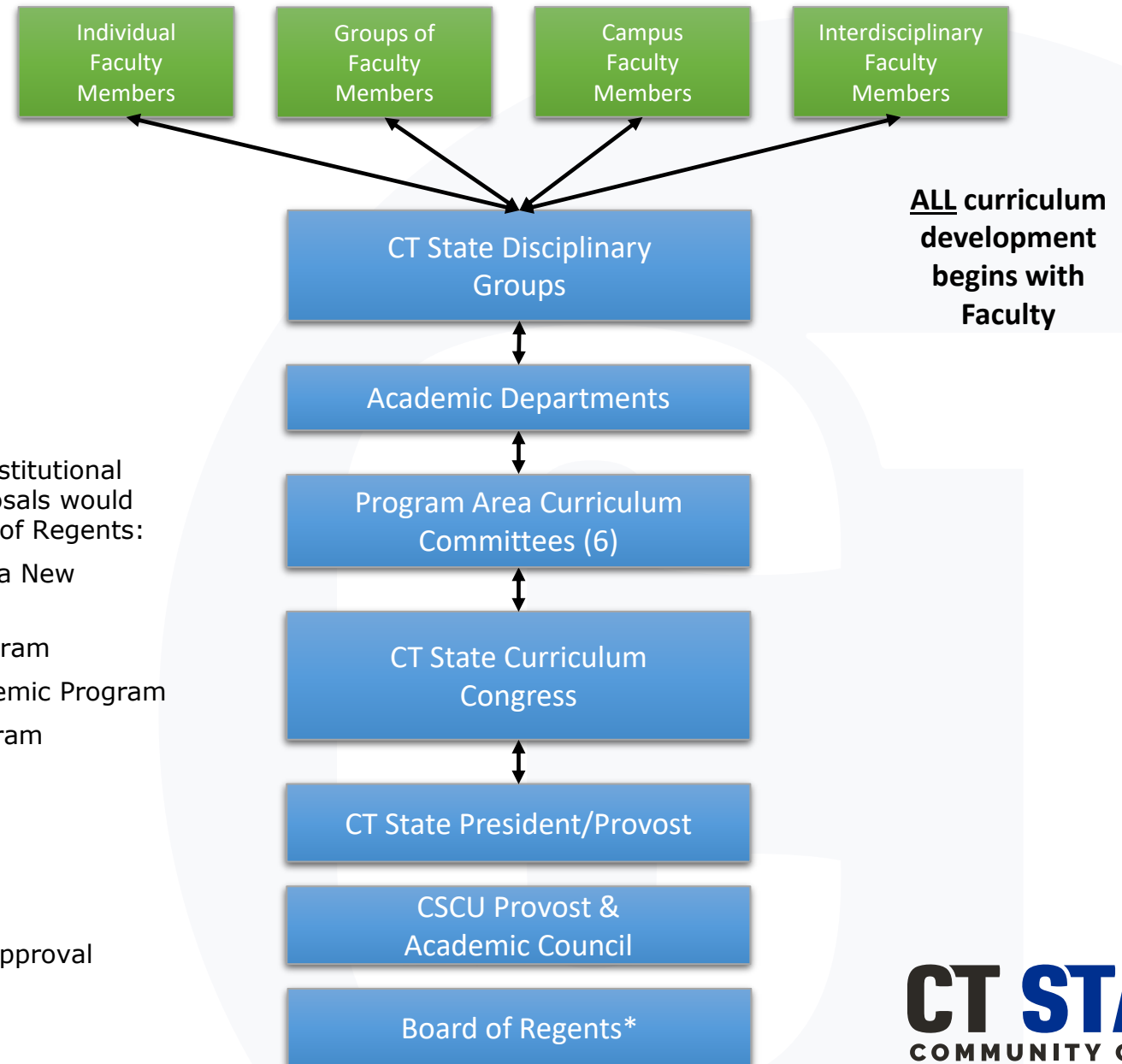


New Curriculum Development & Approval

*BOR policy requires prior approval for the following institutional actions regarding academic programming. These proposals would continue to the CSCU Academic Council and the Board of Regents:

- Above Threshold Establishment or Modification of a New Academic Program
- Reinstatement of Discontinued or Suspended Program
- Continued Licensure and Accreditation of an Academic Program
- Replication of a College of Technology (COT) Program
- Establishment of a CSCU Center/ Institute
- Suspension of an Academic Program
- Discontinuation of an Academic Program

Course proposals would complete the development & approval process with the CT State Provost/President.



Shared Governance Model

College Senate:

- Purpose: The College Senate is the main forum for discussion of issues that affect the entire CT State community, such as, but not limited to, the following:
 - academic calendar and scheduling
 - academic-related standards and policy recommendations
 - issues concerning students, faculty, or staff of Connecticut State Community College
 - admissions, registration, and financial aid

Shared Governance Model

College Senate Membership:

- 39 elected voting members: *(increased from 27 in original proposal)*
 - 12 full-time faculty *(one from each campus)*
 - 12 full-time professional/classified staff *(one from each campus)*
 - 12 non-management/at-large members *(one from each campus) (added in response to feedback)*
 - 3 students *(one SGA representative from each region)*
- Two-year initial term
 - Term limits to be decided by the College Senate by-laws
- Co-chairs elected within Senate
 - 1 Faculty member, 1 Staff member

Shared Governance Model

Curriculum Congress:

- Primary charge: to review and approve curriculum proposals for CT State
- The Curriculum Congress is not a sub-committee of the College Senate for the following reasons:
 - To honor the NECHE standard that curriculum is the primary domain of faculty (3.15)
 - To maximize the ability to timely respond to industry needs
 - To streamline the process of curriculum development
 - (This model is currently in place at several colleges in the system.)
- All curricular recommendations will be applicable to CT-State including local unique campus programs that may only be currently offered at a single campus.
- There should be representation from a variety of disciplines as well as relevant enrollment services, administration, and other professional staff.

Shared Governance Model

Curriculum Congress Membership:

- 33 elected voting members: *(increased from 27 in original proposal)*
 - 24 full-time faculty *(4 from each academic program area, with no more than 1 from each academic discipline group) (increased from 18 in original proposal in response to feedback)*
 - 6 community college professional (CCP) positions
 - 1 from Advising
 - 1 from Registration
 - 1 CCP with direct curricular responsibilities *(changed from "at-large" in original proposal in response to feedback)*
 - 1 from Library *(changed from "at-large" in original proposal in response to feedback)*
 - 2 At-Large
 - 3 Students *(one SGA representative from each region)*

Note: The Curriculum Congress should include at least one representative (faculty/staff) from each of the 12 campuses... If there is no representation from a campus, that campus's senate will elect a non-voting member to the Congress to ensure communication between each campus and the Congress.

Shared Governance Model

Program Area Curriculum Committee (PACC):

(Added this body to the model in response to feedback)

- Primary charge: to review and propose curriculum proposals from each academic program area in CT State.
- A Program Area Curriculum Committee (PACC) for each of the six CT State Program Areas will be established in order to:
 - Honor the NECHE standard that curriculum is the primary domain of faculty (3.15)
 - Increase local faculty involvement in the curriculum approval process
 - Maximize the ability to timely respond to industry needs
 - Streamline the curriculum development process by addressing inter-departmental curriculum issues across each program area prior to being forwarded to the Curriculum Congress

(continued...)

Shared Governance Model

Program Area Curriculum Committee (PACC): (...continued)

- PACCs will review and refine curriculum proposals prior to being forwarded to the Curriculum Congress.
- 6 PACCs will be formed:
 - Social & Behavioral Sciences PACC
 - Arts & Humanities PACC
 - Sciences & Mathematics PACC
 - Nursing & Health Careers PACC
 - Business & Hospitality PACC
 - Engineering & Technology PACC

Dean, Social/Behavioral Science	Dean, Arts & Humanities	Dean, Natural & Physical Sciences	Dean, Nursing & Health Careers	Dean, Business & Hospitality	Dean, Engineering & Technology
Assoc Dean, ECON, GEO, HIS, Latino Studies, POL, Women Studies	Assoc Dean, Asst Dean, English	Assoc Dean, Biology, Biochem	Assoc Dean, Nursing Dir, Nursing	Assoc Dean, Business, Accounting	Assoc Dean, Adv. Manufacturing
Assoc Dean, ANT, PSY, SOC	Assoc Dean, COM, ESL, HUM, PHI, REL, World Languages	Assoc Dean, AST, CHE, EAS, EVS, GEO, HRT, Natural Resources, PHY	Assoc Dean, DMS, MED, NMT, RAD, RDT, SUR, VET	Assoc Dean, LGL, BOT, CIS, MIS, DTS, HIM/HIT, Culinary	Assoc Dean, Engineering & Tech Careers
Assoc Dean, CJS, DARC, Disability Studies, Deaf Studies, HSE, SLP, THR	Assoc Dean, ART, DGA, GRA, MUS, THR	Assoc Dean, Asst Dean, Mathematics	Assoc Dean, DAS, DHY, EXS, MAS, NUT, ODD, OTA, PMD, PTA, RSP		Assoc Dean, Computer Science & Technology
Assoc Dean, ECE, EDUC, Gen Studies, LAS, CCS					

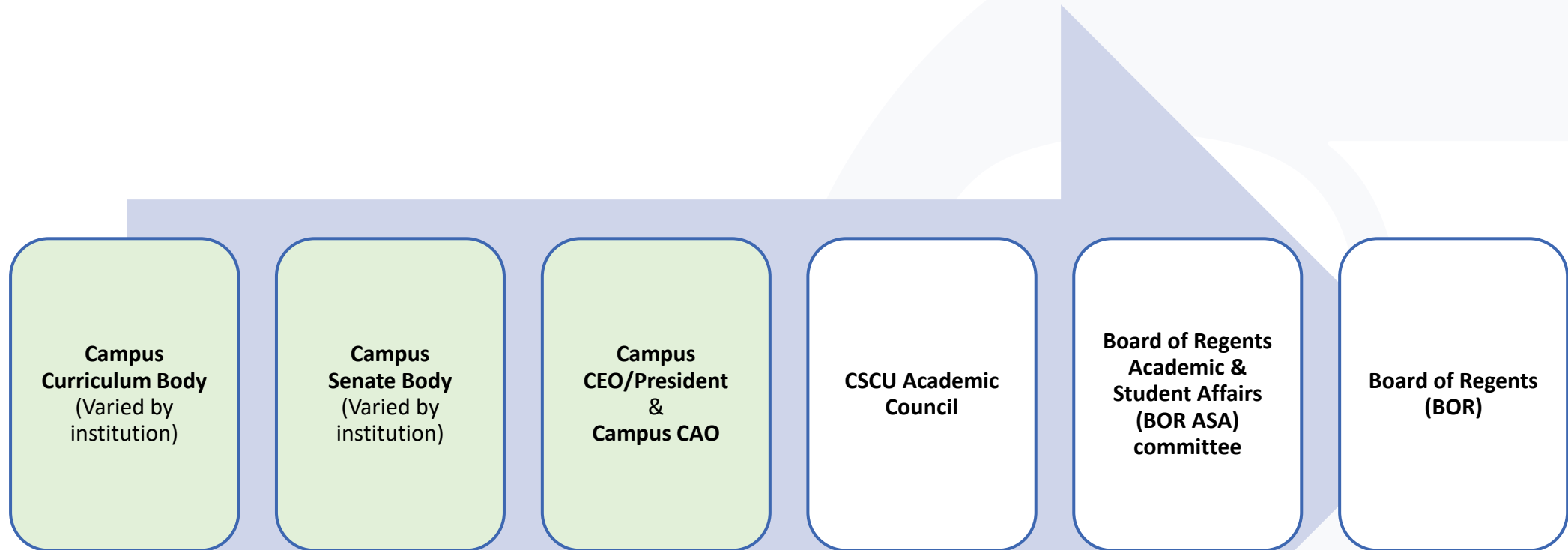
DRAFT

Shared Governance Model

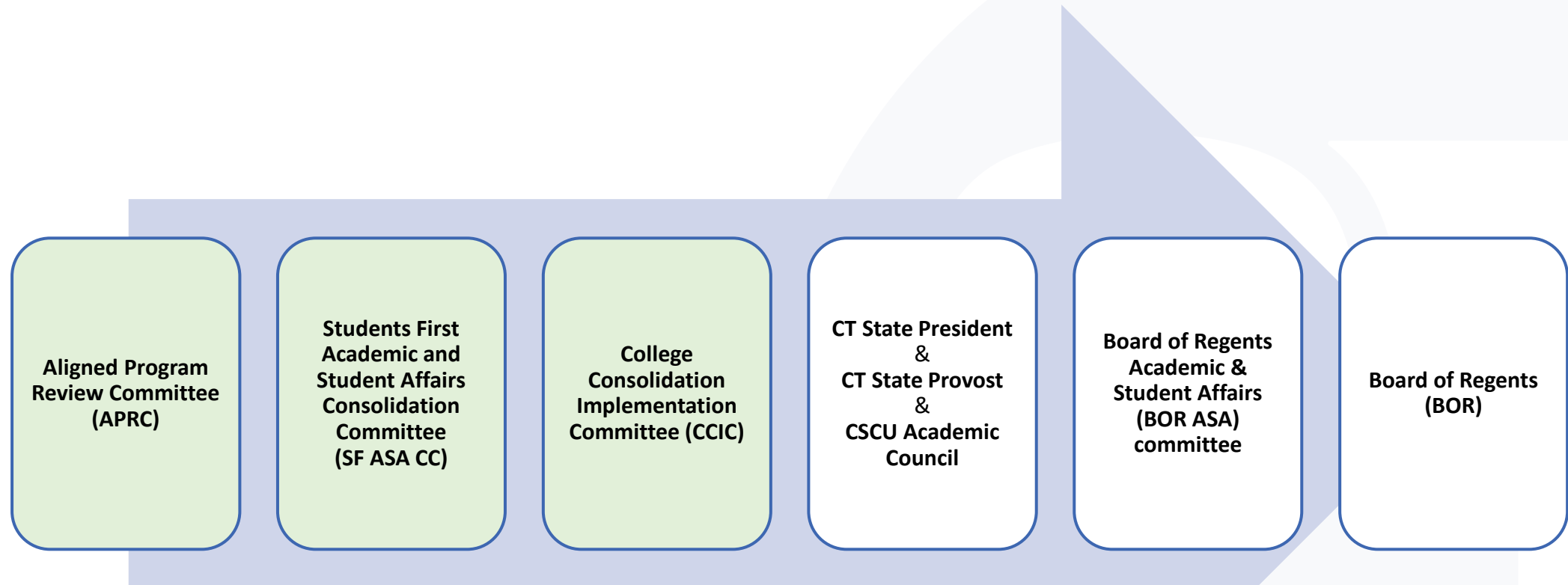
Program Area Curriculum Committee (PACC) Membership:

- 6-8 elected voting members in each PACC:
 - There should be representation from each academic department in each program area.
 - Ideally, 2 full-time faculty from each academic department in an academic program area
 - *However, if there are less than 3 academic departments a given program area, 3 representatives from each academic department will be selected to ensure the PACC is comprised of at least 6 faculty from the program area.*
 - If there are multiple disciplines in an academic department, it is recommended that the two representatives be from different subject areas and different campuses.
 - In total, approximately 38 FT Faculty anticipated in PACC membership, engaged in curriculum governance within each program area.

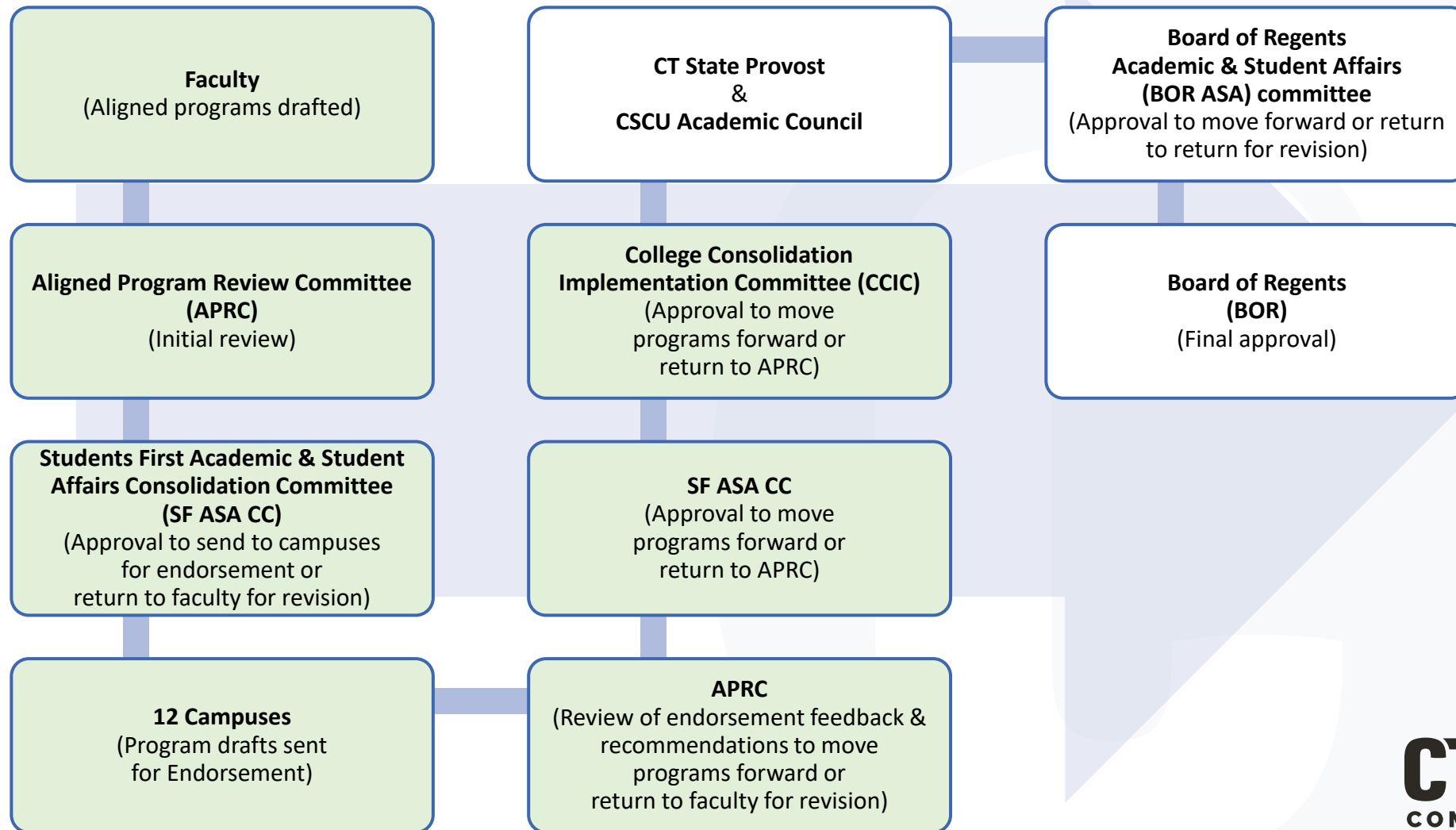
Legacy Governance Process



Transitional Governance Process

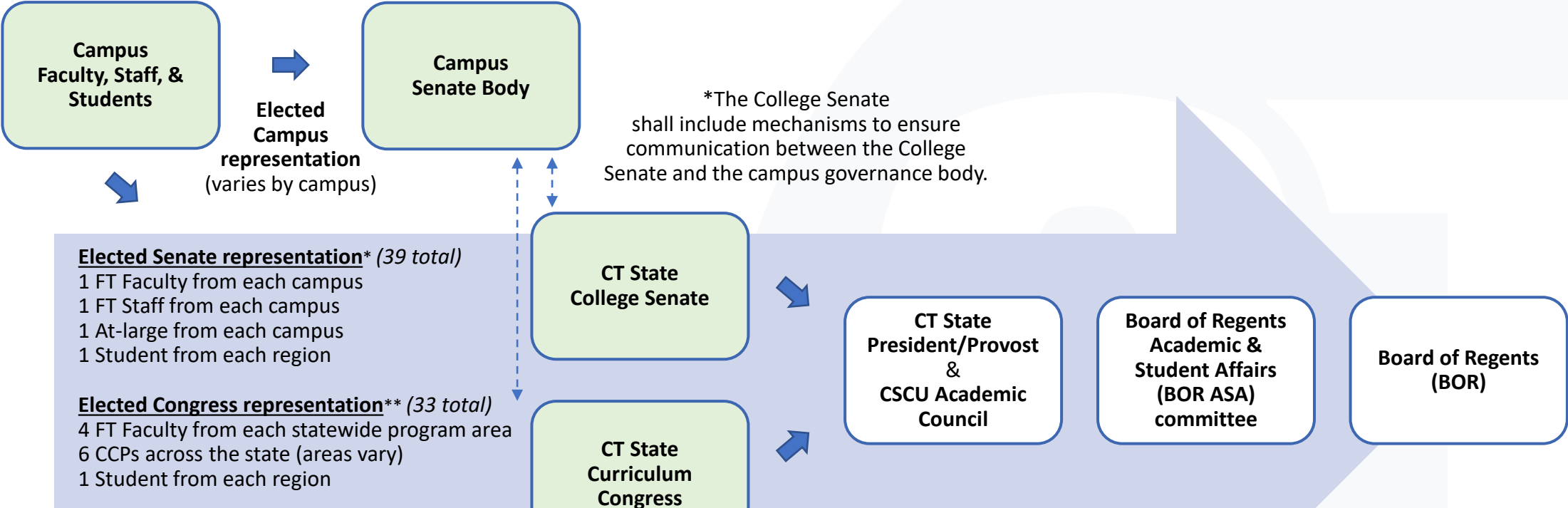


Transitional Curriculum Process



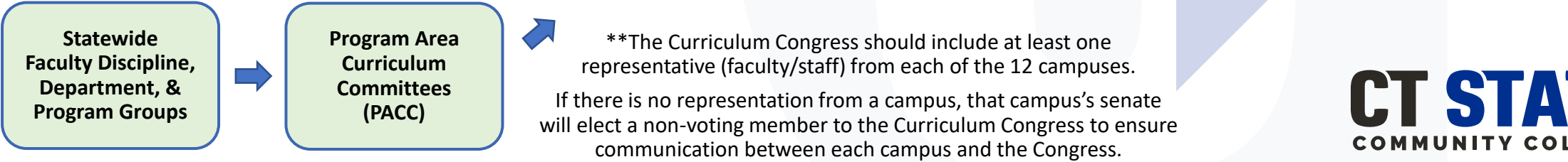
New Governance Process

Policy/Non-Curriculum Issues



*The College Senate shall include mechanisms to ensure communication between the College Senate and the campus governance body.

Curriculum Issues



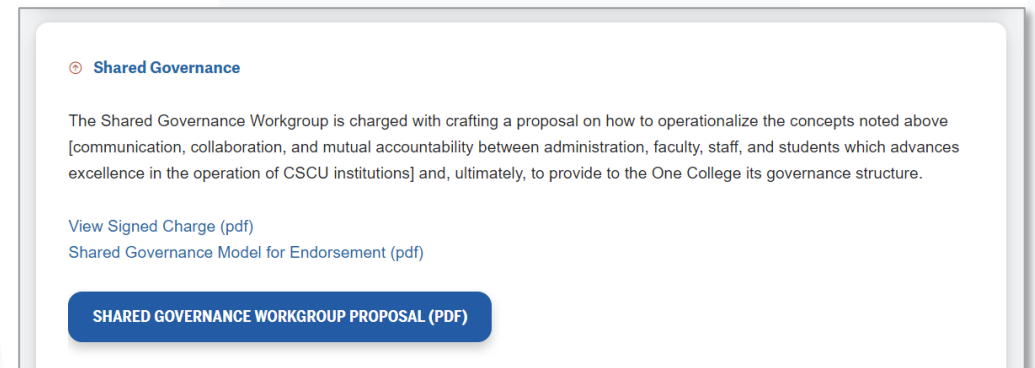
Shared Governance Model

[CT State Merger Website](http://www.ct.edu/merger) (www.ct.edu/merger)

- Click “Consolidation” link
- Click “Working Groups” link in menu

[Updated Shared Governance Proposal](https://www.ct.edu/consolidation/groups) (<https://www.ct.edu/consolidation/groups>)

- Open the “Shared Governance” Option
- Updated proposal available
- Approved by CCIC (March 2, 2022)
- Document includes a 2-page summary of changes made to the model in response to feedback received after the public comment period.



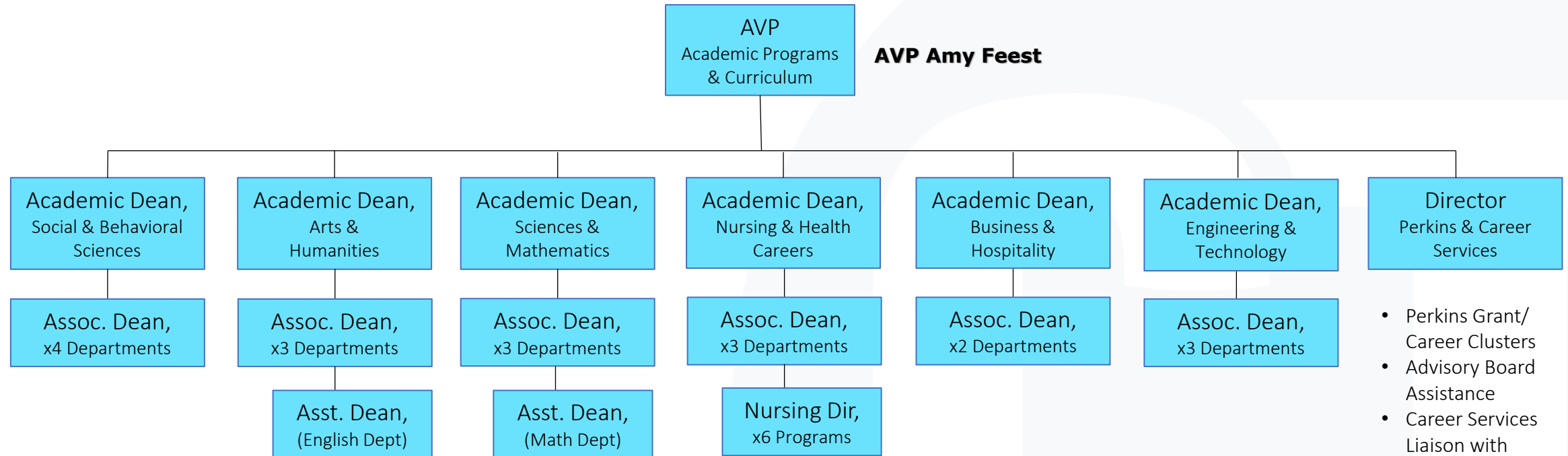
Shared Governance

The Shared Governance Workgroup is charged with crafting a proposal on how to operationalize the concepts noted above [communication, collaboration, and mutual accountability between administration, faculty, staff, and students which advances excellence in the operation of CSCU institutions] and, ultimately, to provide to the One College its governance structure.

[View Signed Charge \(pdf\)](#)
[Shared Governance Model for Endorsement \(pdf\)](#)

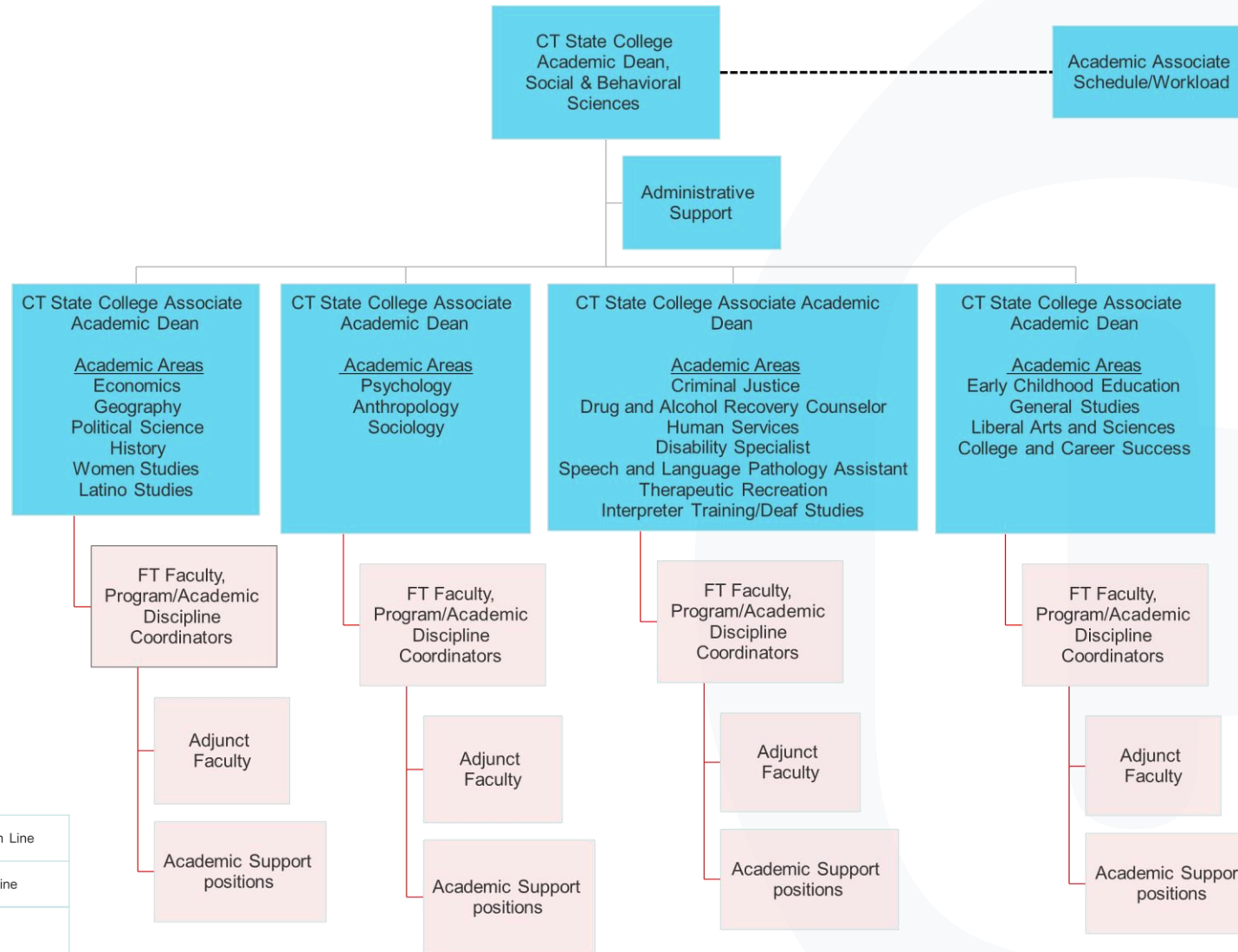
[SHARED GOVERNANCE WORKGROUP PROPOSAL \(PDF\)](#)

Statewide Academic Departments

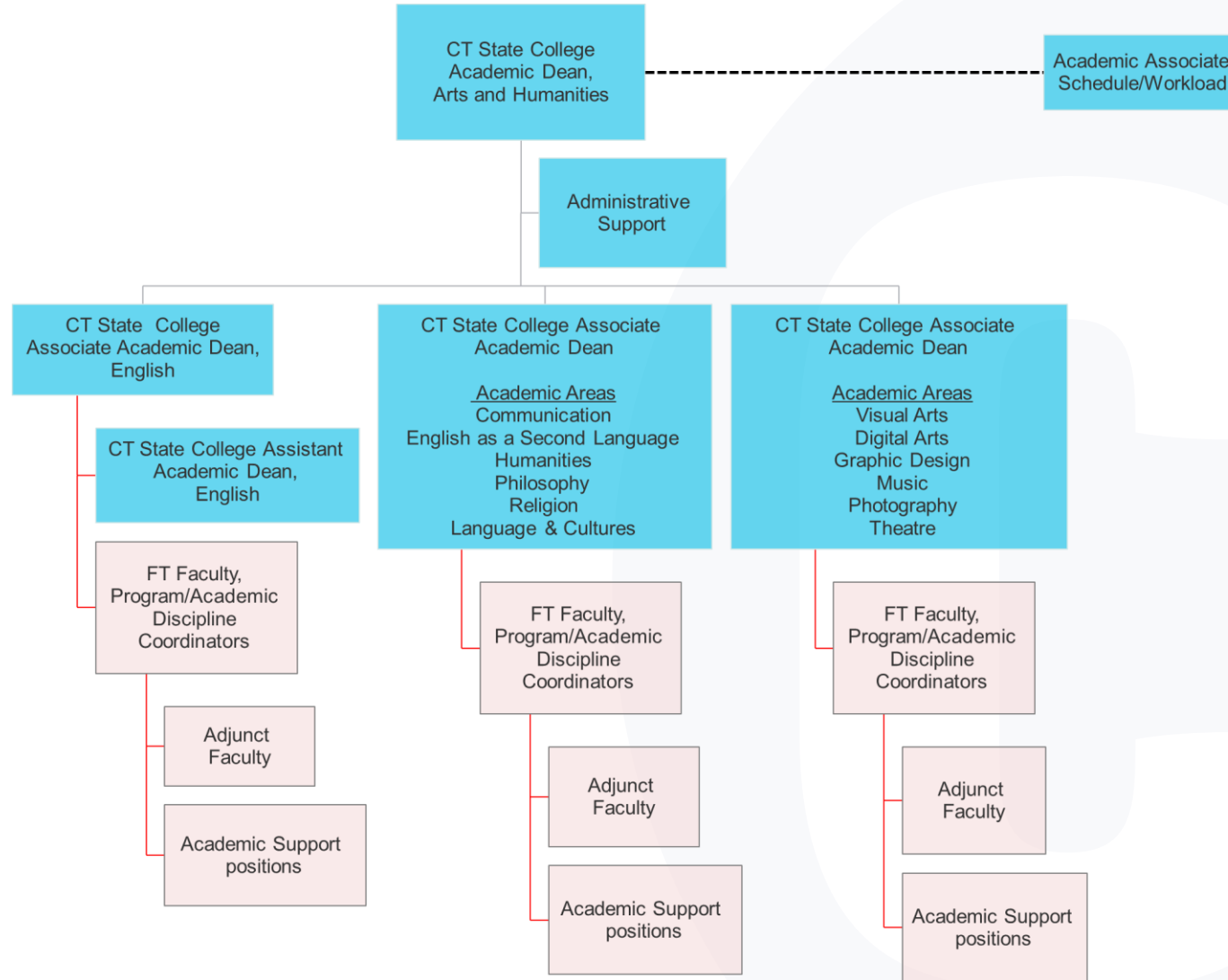


- Perkins Grant/
Career Clusters
- Advisory Board
Assistance
- Career Services
Liaison with
Deans & PCs

Social & Behavioral Sciences

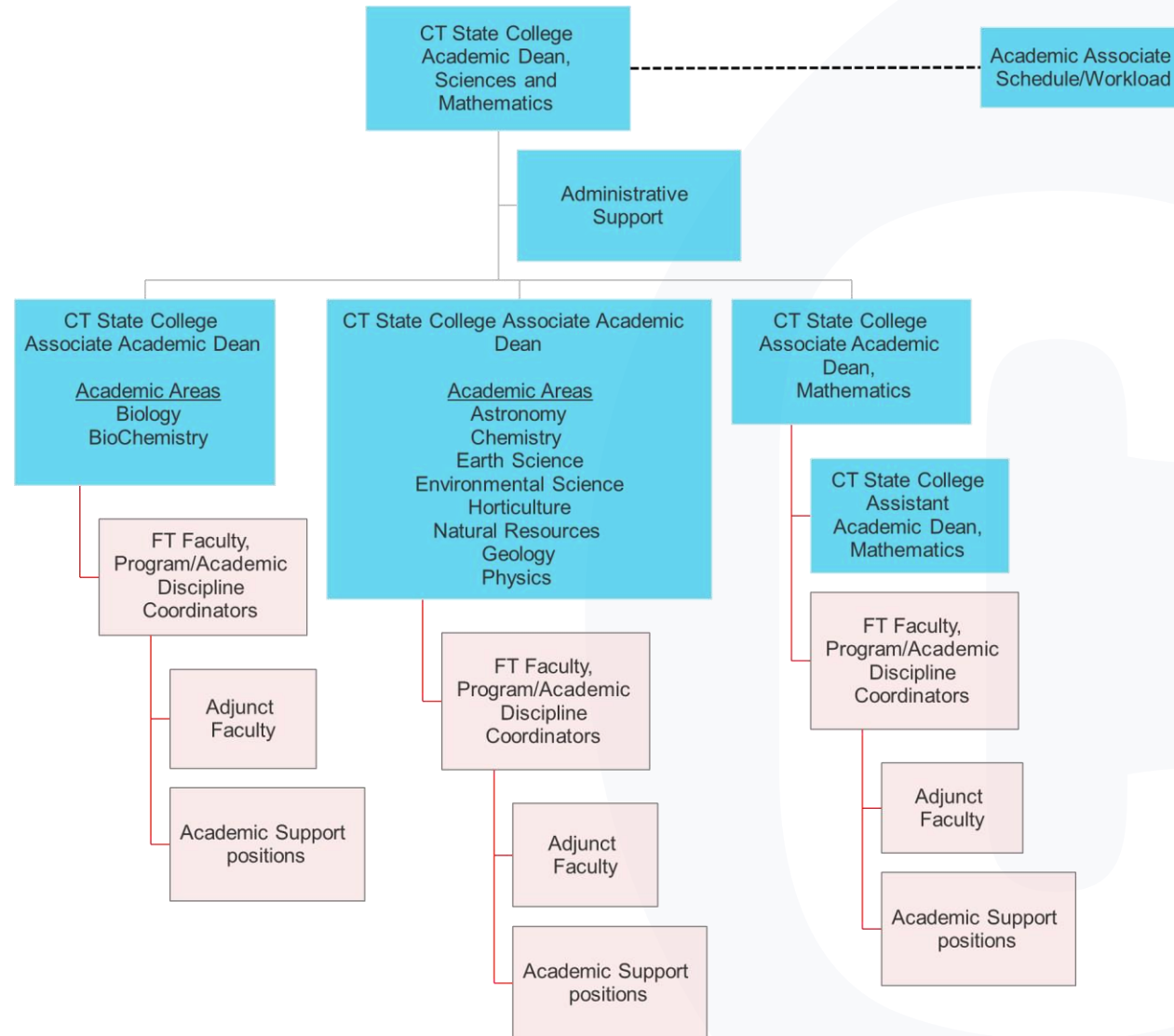


Arts & Humanities



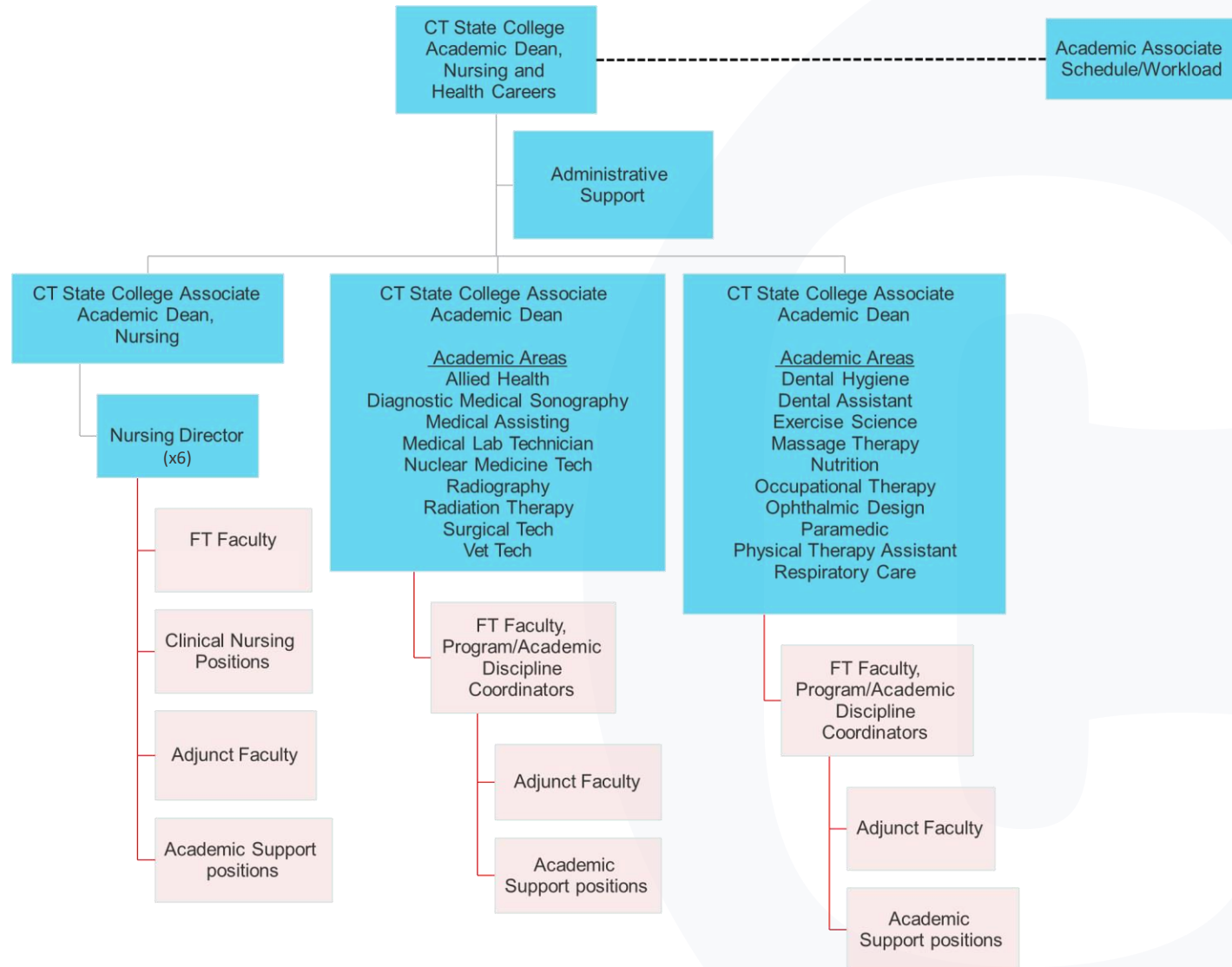
	Central Office Supervision Line
	Campus Supervision Line
	Relationship Line

Sciences & Mathematics



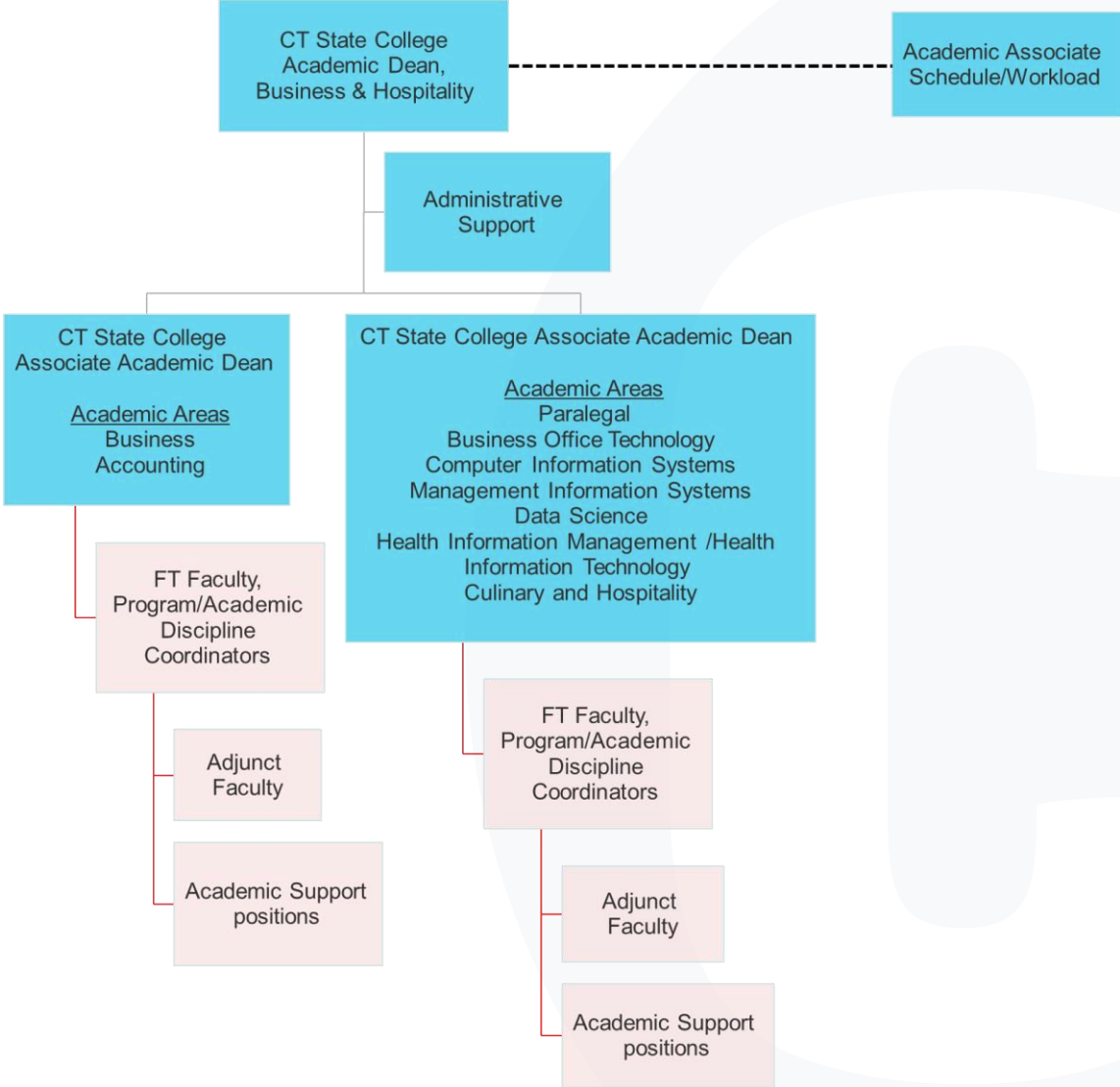
	Central Office Supervision Line
	Campus Supervision Line
	Relationship Line

Nursing & Health Careers



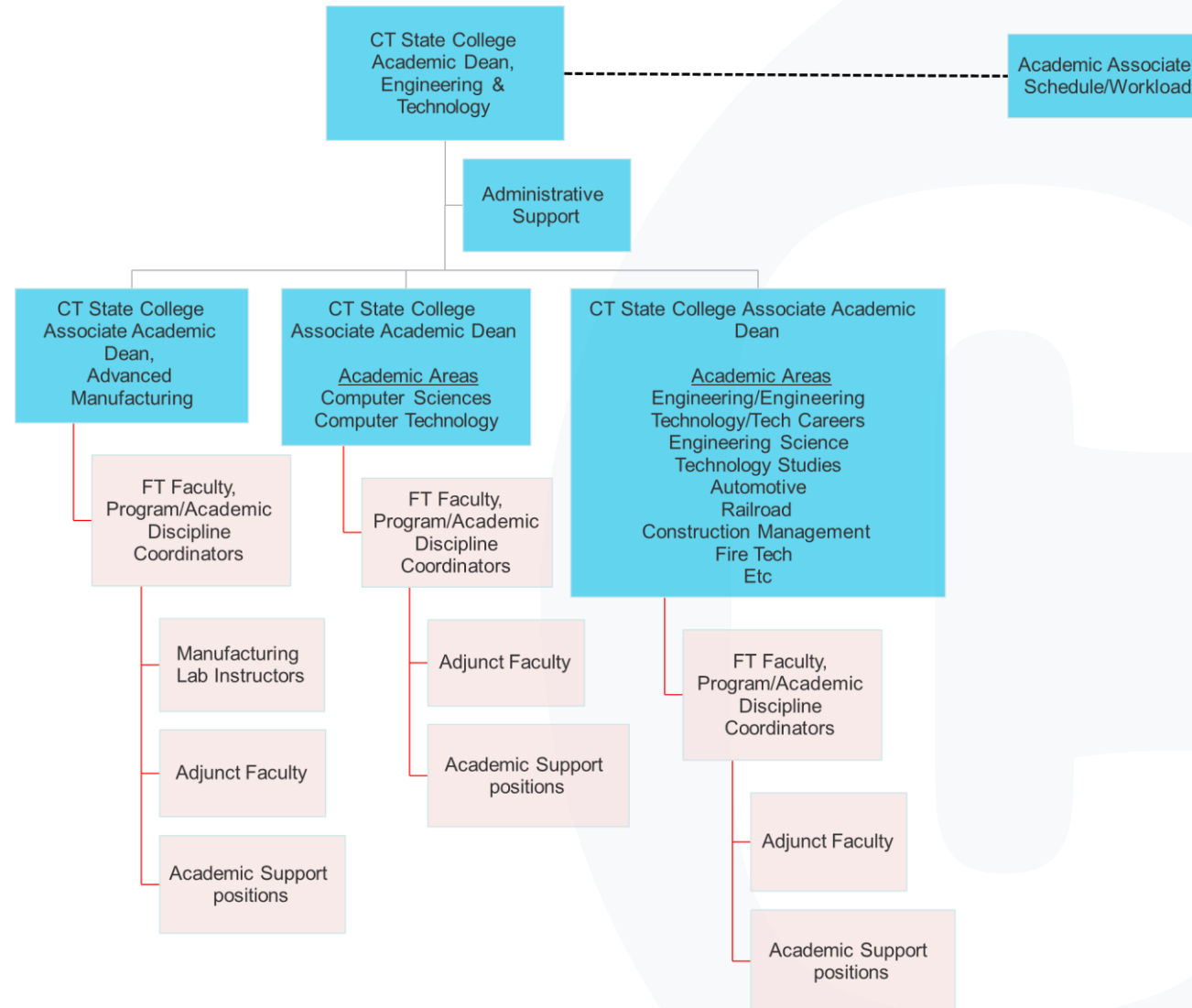
	Central Office Supervision Line
	Campus Supervision Line
	Relationship Line

Business & Hospitality



	Central Office Supervision Line
	Campus Supervision Line
	Relationship Line

Engineering & Technology



	Central Office Supervision Line
	Campus Supervision Line
	Relationship Line

Academic Deans - Program Areas

Searches underway for the six Academic Dean positions over the Program Areas:

February 2022	Searches posted for the six Academic Deans
March 2022	Submission Deadlines: Social and Behavioral Sciences (3/18) Arts and Humanities (3/18) Sciences and Mathematics (3/18) Business and Hospitality (3/18) Nursing and Allied Health (4/8) Engineering and Technology (4/8)
March 2022	Search committees charged
April 2022	Search committee interviews
May 2022	Target start dates for Academic Deans

Associate/Assistant Academic Deans – Academic Departments

The Academic Deans will oversee the new CT State academic departments until the Associate/Assistant Academic Deans are hired.

Sept/Oct 2022	Initial meetings for statewide academic departments convened
Oct/Nov 2022	Associate Academic Dean positions posted
	Faculty volunteers identified for Associate/Assistant Academic Dean search committees
Late 2022–Early 2023	Searches and interviews conducted for Associate Deans
Mid Spring 2023	Target start dates for Associate Academic Deans
	Assistant Academic Dean positions posted
Late Spring 2023	Searches and interviews conducted for Assistant Academic Deans <i>(English and Math only due to the large department sizes)</i>
Summer 2023	Target start dates for Associate Academic Deans

Live Q & A

Questions may be entered in the chat...

Frequently Asked Questions (FAQs)

<https://www.ct.edu/merger/faqs#academic>



CT STATE
COMMUNITY COLLEGE